

LOC I-JOU <b>111.1</b>	APP CRS <b>210°</b>	Rwy Ldg TDZE Apt Elev	<b>8999</b> <b>1430</b> <b>1430</b>
---------------------------	------------------------	-----------------------------	---

# ILS or LOC RWY 21

JOE FOSS FLD (FSD)

**⚠** For inop ALS, increase S-LOC 21 Cats C/D visibility to 1 7/8 SM and S-LOC 21 WADRI fix minimums Cats C/D visibility to RVR 5500.

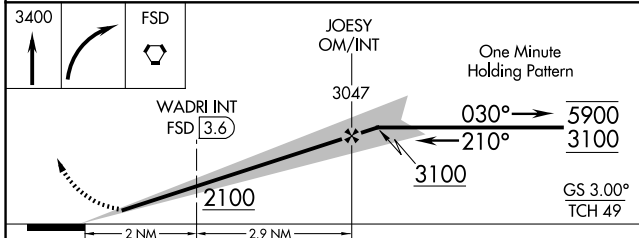
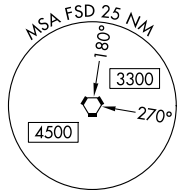
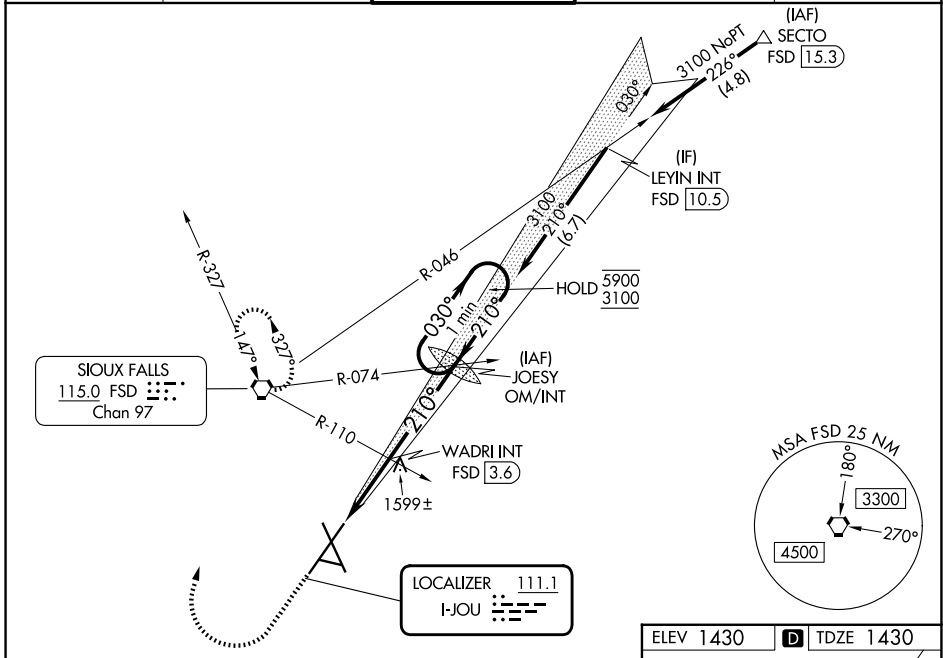
**ASR**

**❄** -30°C

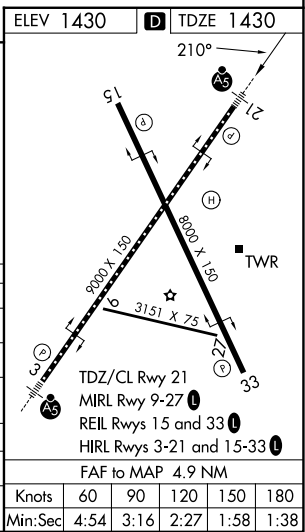
**MALSR**

**⚠** MISSED APPROACH: Climb to 3400 then right turn direct FSD VORTAC and hold.

ATIS <b>126.6</b>	SIoux FALLS APP CON * <b>125.8 284.725</b>	SIoux FALLS TOWER * <b>118.3 (CTAF) 0 257.8</b>	GND CON <b>121.9 348.6</b>	UNICOM <b>122.95</b>
----------------------	---	--	-------------------------------	-------------------------



CATEGORY	A	B	C	D
S-ILS 21	1630/18		200 (200-1/2)	
S-LOC 21	2100/24	670 (700-1/2)	2100-1 1/2	670 (700-1/2)
CIRCLING	2100-1	670 (700-1)	2100-1 7/8	2200-2 1/2
			670 (700-1 7/8)	770 (800-2 1/2)
WADRI FIX MINIMUMS				
S-LOC 21	1800/24	370 (400-1/2)	1800/35	370 (400-3/4)
CIRCLING	1980-1	550 (600-1)	2060-1 3/4	2200-2 1/2
			630 (700-1 3/4)	770 (800-2 1/2)



NC-1, 11 JUN 2026 to 09 JUL 2026

NC-1, 11 JUN 2026 to 09 JUL 2026

Knots	60	90	120	150	180
Min:Sec	4:54	3:16	2:27	1:58	1:38