

WAAS CH <b>90235</b>	APP CRS <b>150°</b>	Rwy Ldg TDZE Apt Elev	<b>8000</b> <b>1429</b> <b>1430</b>
-------------------------	------------------------	-----------------------------	---

# RNAV (GPS) RWY 15

JOE FOSS FLD (F'SD)

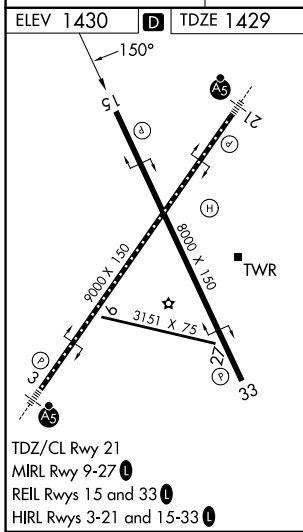
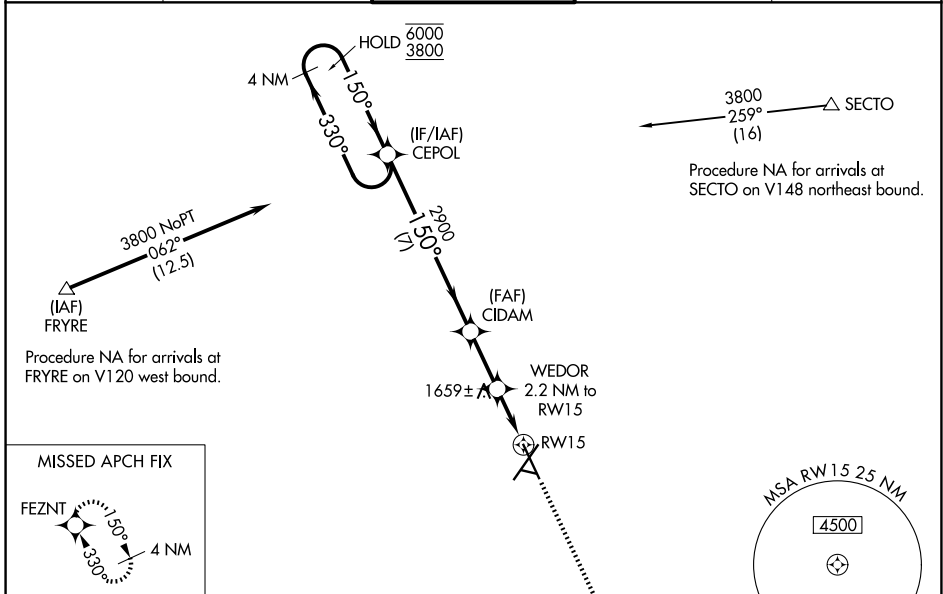
RNP APCH-GPS.

**ASR** -30°C

Rwy 15 helicopter visibility reduction below 3/4 SM NA. For uncompensated Baro-VNAV systems, LNAV/VNAV NA below -21°C or above 54°C.

MISSED APPROACH: Climb to 3800 direct FEZNT and hold.

ATIS <b>126.6</b>	SIoux FALLS APP CON * <b>125.8 284.725</b>	SIoux FALLS TOWER * <b>118.3 (CTAF) 257.8</b>	GND CON <b>121.9 348.6</b>	UNICOM <b>122.95</b>
----------------------	---	--	-------------------------------	-------------------------



	CEPOL	CIDAM	WEDOR	FEZNT
	4 NM Holding Pattern	2900	2.2 NM to RWY 15	3800
	6000 ← 330°	150° →	150°	↑
	3800	2900	2160	✦
	GP 3.00° TCH 48	7 NM	2.3 NM	0.8
				1.4 NM
				1.4 NM
CATEGORY	A	B	C	D
LPV DA		1839-1 1/8	410 (500-1 1/8)	
LNAV/VNAV DA		1909-1 3/8	480 (500-1 3/8)	
LNAV MDA	1920-1	491 (500-1)	1920-1 3/8	491 (500-1 3/8)
CIRCLING	1960-1 530 (600-1)	1980-1 550 (600-1)	2060-1 3/4 630 (700-1 3/4)	2200-2 1/2 770 (800-2 1/2)

NC-1, 11 JUN 2026 to 09 JUL 2026

NC-1, 11 JUN 2026 to 09 JUL 2026