

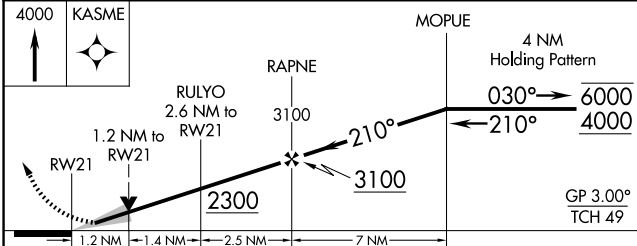
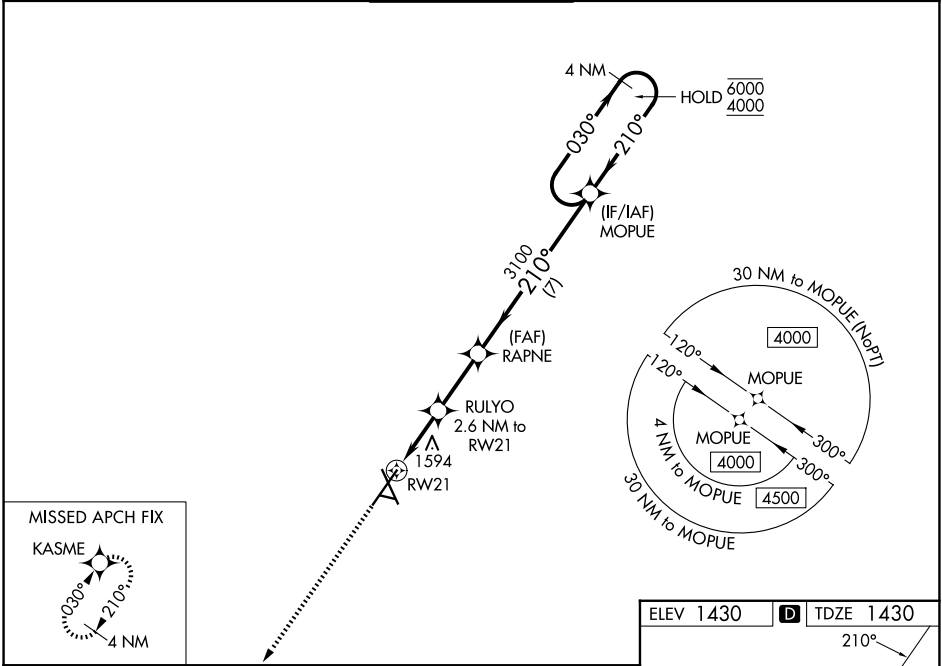
WAAS CH <b>99323</b> <b>W21A</b>	APP CRS <b>210°</b>	Rwy Ldg TDZE Apt Elev	<b>8999</b> <b>1430</b> <b>1430</b>
--	------------------------	-----------------------------	---

# RNAV (GPS) RWY 21

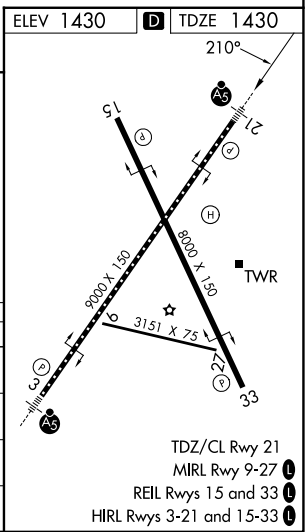
JOE FOSS FLD (FSD)

RNP APCH - GPS.	MALSR 	MISSED APPROACH: Climb to 4000 direct KASME and hold.
<p>For uncompensated Baro-VNAV systems, LNAV/VNAV NA below -21°C or above 54°C. For inop ALS, increase LNAV/VNAV all Cats visibility to RVR 4500.</p>		

ATIS <b>126.6</b>	SIoux FALLS APP CON* <b>125.8 284.725</b>	SIoux FALLS TOWER* <b>118.3 (CTAF) 0 257.8</b>	GND CON <b>121.9 348.6</b>	UNICOM <b>122.95</b>
----------------------	--	---	-------------------------------	-------------------------



CATEGORY	A	B	C	D
LPV DA		1630/18	200 (200-½)	
LNAV/VNAV DA		1704/24	274 (300-½)	
LNAV MDA	1860/24	430 (500-½)	1860/40	430 (500-¾)
CIRCLING	1980-1	550 (600-1)	2060-1¾ 630 (700-1¾)	2200-2½ 770 (800-2½)



NC-1, 11 JUN 2026 to 09 JUL 2026

NC-1, 11 JUN 2026 to 09 JUL 2026