

VORTAC FSD 115.0 Chan 97	APP CRS 147°	Rwy Ldg 8000 TDZE 1429 Apt Elev 1430
--	------------------------	---

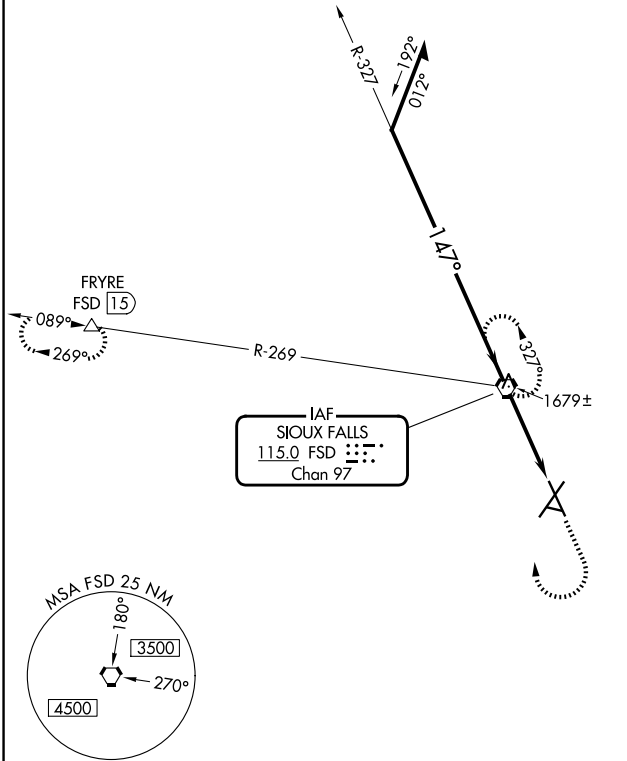
VOR or TACAN RWY 15

JOE FOSS FLD (FSD)

A Rwy 15 helicopter visibility reduction below 3/4 SM NA.
ASR -30°C

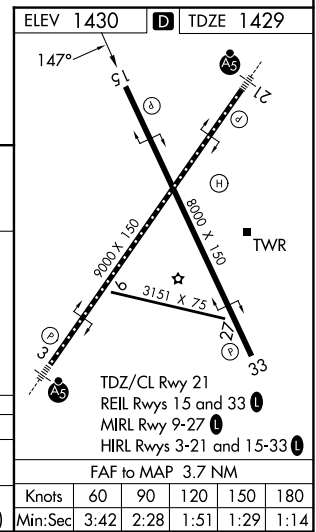
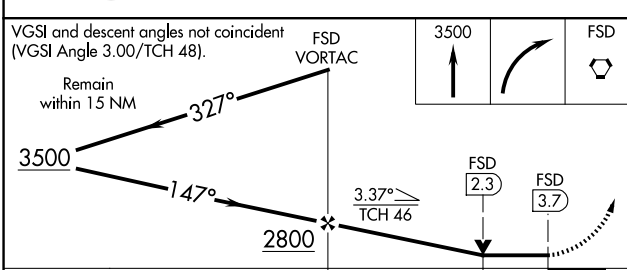
MISSED APPROACH: Climb to 3500 then right turn direct FSD VORTAC and hold. (TACAN aircraft continue climb to 5000 via FSD R-269 to FRYRE 15 DME and hold west, right turns, 089° inbound)

ATIS 126.6	SIoux FALLS APP CON* 125.8 284.725	SIoux FALLS TOWER* 118.3(CTAF) 257.8	GND CON 121.9 348.6	UNICOM 122.95
----------------------	--	--	-------------------------------	-------------------------



NC-1, 11 JUN 2026 to 09 JUL 2026

NC-1, 11 JUN 2026 to 09 JUL 2026



CATEGORY	A	B	C	D	E	
S-15	1920-1	491 (500-1)	1920-1 3/8	491 (500-1 1/8)		
CIRCLING	1960-1 530 (600-1)	1980-1 550 (600-1)	2060-1 3/4 630 (700-1 3/4)	2200-2 1/2 770 (800-2 1/2)	2300-3 870 (900-3)	
						Knots Min:Sec
						60 3:42 90 2:28 120 1:51 150 1:29 180 1:14