

WAAS CH 72910 W11A	APP CRS 114°	Rwy Ldg 8650 TDZE 29 Apt Elev 33
---------------------------------	------------------------	---

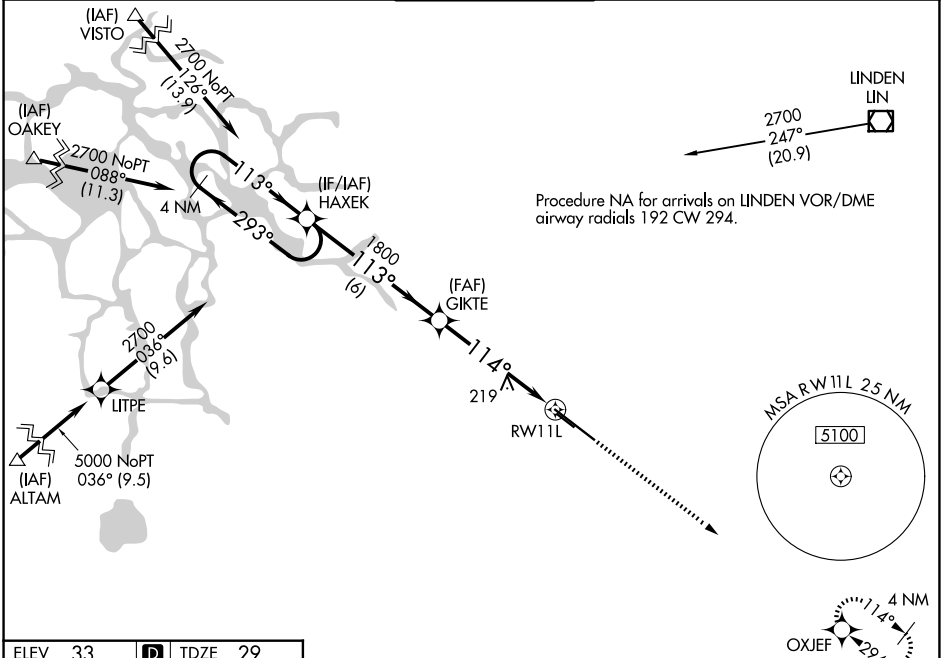
RNAV (GPS) RWY 11L

STOCKTON METRO (SCK)

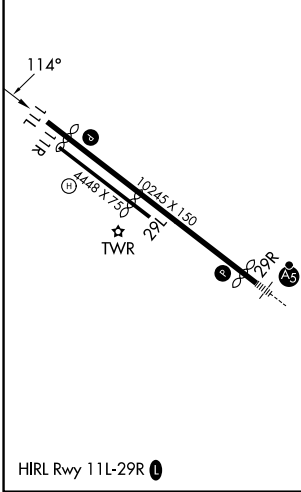
▽ For uncompensated Baro-VNAV systems, LNAV/VNAV NA below -4°C (25°F) or above 54°C (130°F). DME/DME RNP-0.3 NA.

MISSED APPROACH: Climb to 2000 direct OXJEF and hold.

ATIS 118.25	NORCAL APP CON 123.85 278.3 (SE-NW) 125.1 363.2 (N-SE)	STOCKTON TOWER * 120.3 (CTAF) 0 239.0	GND CON 121.9	UNICOM 122.95
-----------------------	--	--	-------------------------	-------------------------



ELEV 33	D	TDZE 29
---------	----------	---------



VGSI and RNAV glidepath not coincident (VGSI Angle 3.00/TCH 75).

4 NM Holding Pattern	HAXEK	GIKTE	2000	OXJEF
2700	←293°	1800	↑	✦
	113°			
GP 3.00°				
TCH 50				
	6 NM	4.2 NM		

*LNAV only.

CATEGORY	A	B	C	D
LPV DA	229-3/4		200 (200-3/4)	
LNAV/VNAV DA	471-1 1/2		442 (500-1 1/2)	
LNAV MDA	480-1	451 (500-1)	480-1 3/8	451 (500-1 3/8)
CIRCLING	500-1 467 (500-1)	540-1 507 (600-1)	640-1 3/4 607 (700-1 3/4)	640-2 607 (700-2)

SW-2, 11 JUN 2026 to 09 JUL 2026

SW-2, 11 JUN 2026 to 09 JUL 2026