

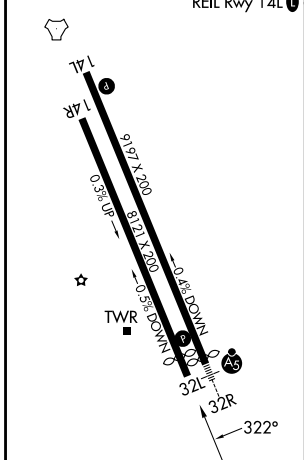
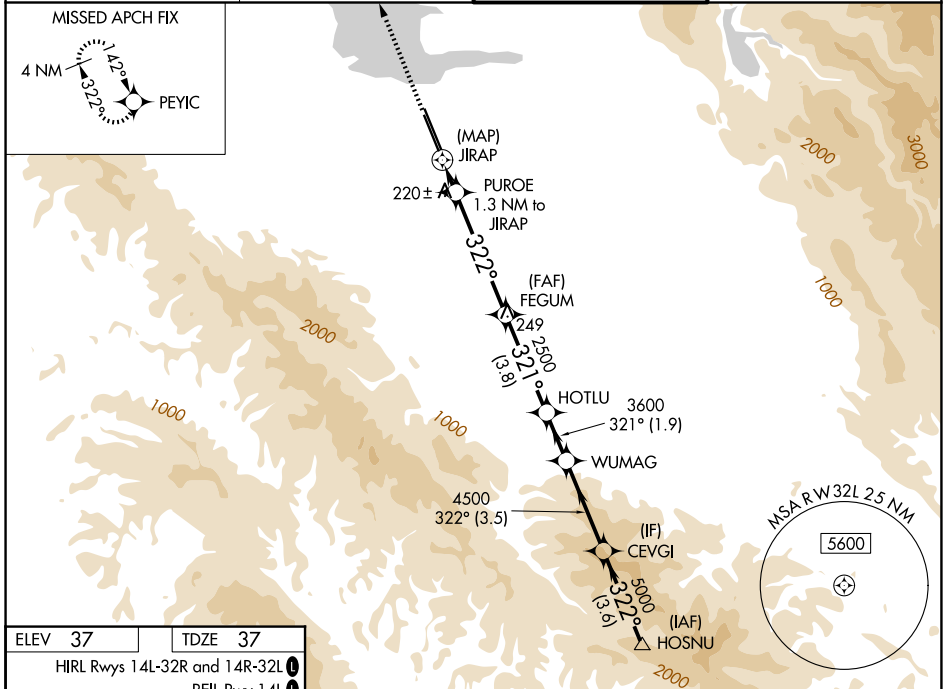
WAAS CH 50242 W32A	APP CRS 322°	Rwy Ldg TDZE Apt Elev	7521 37 37
--	------------------------	-----------------------------	---------------------------------------

RNAV (GPS) RWY 32L

MOFFETT FEDERAL AIRFIELD (NUQ)

RNP APCH - GPS.	MISSED APPROACH: Climb to 3200 direct PEYIC and hold.
<p>▼ Rwy 32L helicopter visibility reduction below 3/4 SM NA. For uncompensated Baro-VNAV systems, LNAV/VNAV NA below 0°C or above 47°C.</p> <p>▲</p>	

ATIS 124.175 283.0	NORCAL APP CON 120.1 290.25	MOFFETT TOWER* 119.55 (CTAF) 0 259.65	GND CON 121.85 278.95
------------------------------	---------------------------------------	---	---------------------------------



ELEV 37	TDZE 37	HIRL Rwy 14L-32R and 14R-32L				REIL Rwy 14L			
3200	PEYIC	PUROE 1.3 NM to JIRAP	FEGUM	HOTLU	WUMAG	CEVGI	HOSNU	MSA RWY 32L 2.5 NM 5600	
3200	3200	2500	3600	4500	5000	5500	GP 3.50° TCH 55		
0.5	0.6	0.7	4.7 NM	3.8 NM	1.9 NM	3.5 NM	3.6 NM		
CATEGORY	A	B	C	D					
LPV DA	338-7/8		301 (300-7/8)						
LNAV/VNAV DA	478-13/8		441 (500-13/8)						
LNAV MDA	480-1		443 (500-1)		480-13/8		443 (500-13/8)		
CIRCLING	540-1 503 (600-1)		600-1 563 (600-1)		620-1 1/2 583 (600-1 1/2)		780-2 1/4 743 (800-2 1/4)		

SW-2, 11 JUN 2026 to 09 JUL 2026

SW-2, 11 JUN 2026 to 09 JUL 2026