

WAAS CH <b>53343</b> <b>W32B</b>	APP CRS <b>322°</b>	Rwy Ldg TDZE Apt Elev	<b>9006</b> <b>31</b> <b>37</b>
--	------------------------	-----------------------------	---------------------------------------

# RNAV (GPS) RWY 32R

MOFFETT FEDERAL AIRFIELD (NTUQ)

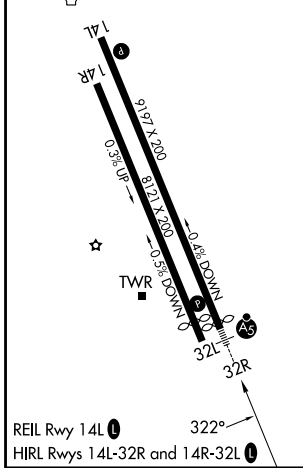
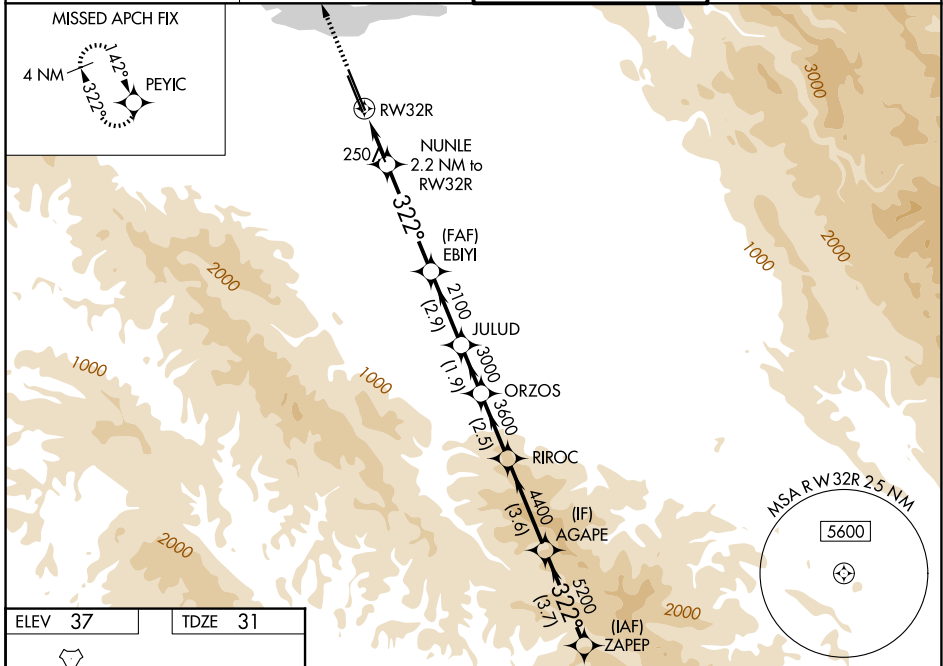
RNP APCH - GPS.

**⚠** For uncompensated Baro-VNAV systems, LNAV/VNAV NA below -15°C or above 54°C. Rwy 32R helicopter visibility reduction below 3/4 SM NA.  
**⚠** For inop ALS increase LPV all Cats visibility to 1 1/4 SM, LNAV/VNAV all Cats visibility to 1 3/8 SM and LNAV Cats A/B to 1 SM and Cats C/D visibility to 1 3/8 SM.



MISSED APPROACH: Climb to 3200 direct PEYIC and hold.

ATIS <b>124.175 283.0</b>	NORCAL APP CON <b>120.1 290.25</b>	MOFFETT TOWER* <b>119.55 (CTAF) 0 259.65</b>	GND CON <b>121.85 278.95</b>
------------------------------	---------------------------------------	---	---------------------------------



	3200 PEYIC	NUNLE 2.2 NM to RW32R	EBIYI 2100	JULUD 3000	ORZOS 3600	RIROC 4400	AGAPE 5200	ZAPEP 5500
		1.3 NM	0.9	4.1 NM	2.9 NM	1.9 NM	2.5 NM	3.6 NM
CATEGORY	A		B		C		D	
LPV DA	452-3/4		421 (500-3/4)					
LNAV/VNAV DA	493-1		462 (500-1)					
LNAV MDA	500-3/4		469 (500-3/4)		500-1		469 (500-1)	
CIRCLING	540-1 503 (600-1)		600-1 563 (600-1)		620-1 1/2 583 (600-1 1/2)		780-2 1/2 743 (800-2 1/2)	

SW-2, 11 JUN 2026 to 09 JUL 2026

SW-2, 11 JUN 2026 to 09 JUL 2026