

TACAN NUQ Chan 123 (117.6)	APP CRS 321°	Rwy Ldg TDZE Apt Elev	7521 36 37
--	------------------------	-----------------------------	---------------------------------------

TACAN RWY 32L

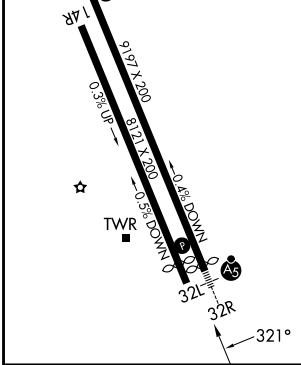
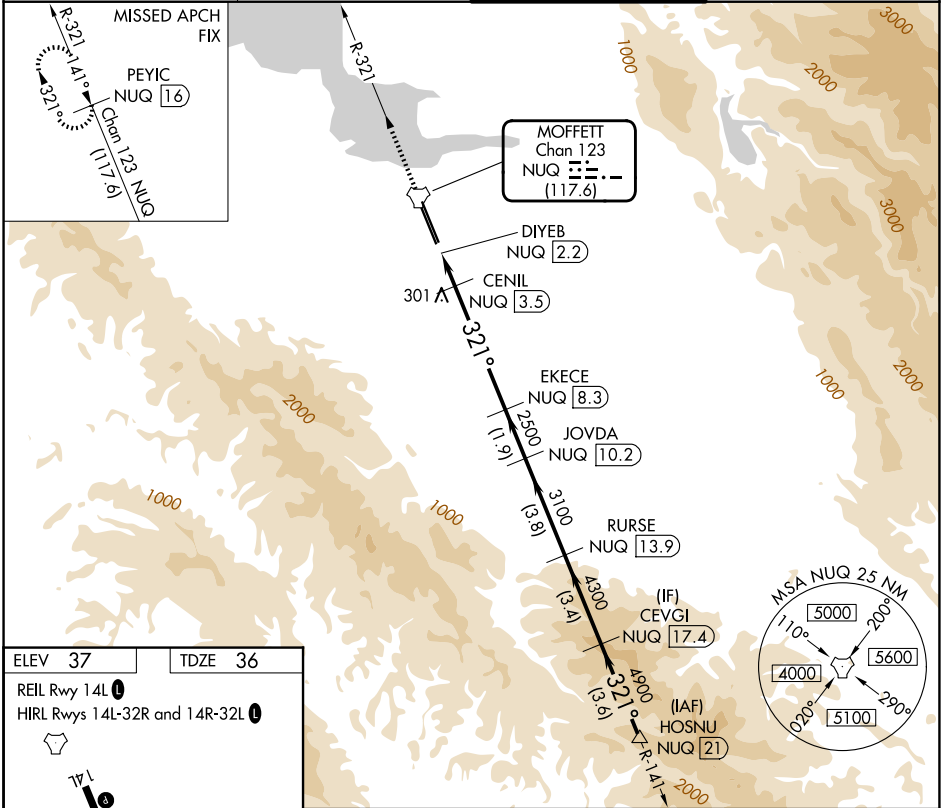
MOFFETT FEDERAL AIRFIELD (NUQ)

RADAR required for procedure entry.

Rwy 32L helicopter visibility reduction below ¾ SM NA.

MISSED APPROACH: Climb to 3200 on NUQ TACAN R-321 to PEYIC/16 DME and hold.

ATIS 124.175 283.0	NORCAL APP CON 120.1 290.25	MOFFETT TOWER* 119.55 (CTAF) 0 259.65	GND CON 121.85 278.95
------------------------------	---------------------------------------	---	---------------------------------



3200	PEYIC NUQ R-321	CENIL NUQ	EKECE NUQ	JOVDA NUQ	RURSE NUQ	CEVGI NUQ	HOSNU NUQ
	NUQ [16]	NUQ [3.5]	NUQ [8.3]	NUQ [10.2]	NUQ [13.9]	NUQ [17.4]	NUQ [21]
	DIYEB NUQ [2.2]	3.45° TCH 55	720	2500	3100	4300	4900
	0.5	0.8	0.5	4.8 NM	1.9 NM	3.8 NM	3.4 NM
CATEGORY	A	B	C	D	E		
S-32L	560-1	524 (600-1)	560-1½		524 (600-1½)		
CIRCLING	560-1	600-1	620-1½	780-2½	940-3		
	523 (600-1)	563 (600-1)	583 (600-1½)	743 (800-2½)	903 (1000-3)		

SW-2, 11 JUN 2026 to 09 JUL 2026

SW-2, 11 JUN 2026 to 09 JUL 2026