

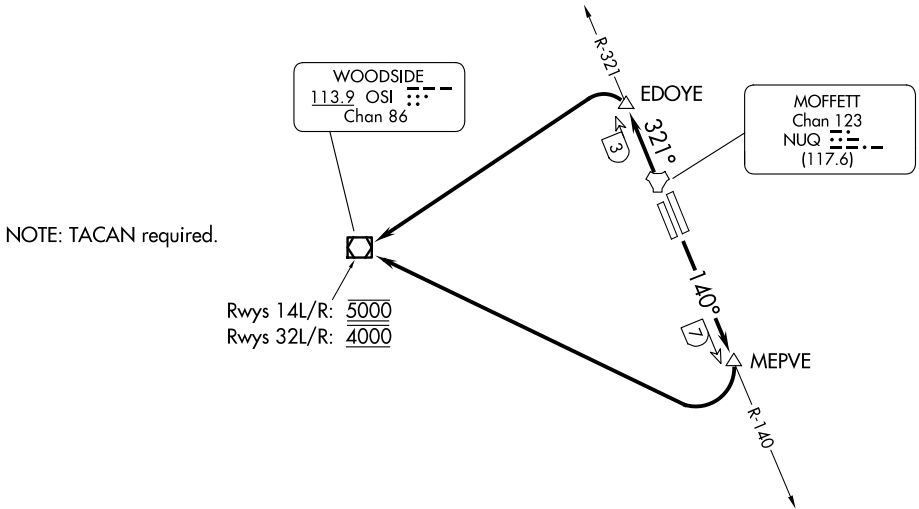
# WOODSIDE TWO DEPARTURE

AL-410 (FAA)

MOFFETT FEDERAL AIRFIELD (NUQ)  
MOUNTAIN VIEW, CALIFORNIA

ATIS  
124.175 283.0  
CLNC DEL  
296.75  
GND CON  
121.85 278.95  
MOFFETT TOWER★  
119.55 (CTAF) 259.65  
NORCAL DEP CON  
121.3 270.35

**TOP ALTITUDE:  
ASSIGNED BY ATC**



### TAKEOFF MINIMUMS

Rwys 14L/R: Standard with minimum climb of 402' per NM to 5000.  
Rwy 32R: Standard with minimum climb of 250' per NM to 4000.  
Rwy 32L: Standard with minimum climb of 246' per NM to 4000.

NOTE: Chart not to scale.

### DEPARTURE ROUTE DESCRIPTION

TAKEOFF RUNWAYS 14L/R: Climb via NUQ R-140 to MEPVE/NUQ 7 DME, then right turn direct to cross OSI VOR/DME at 5000, thence . . . .

TAKEOFF RUNWAYS 32L/R: Climb via NUQ R-321 to EDOYE/NUQ 3 DME, then turn left direct to cross OSI VOR/DME at 4000, thence . . . .

. . . . via RADAR vectors or assigned route.

SW-2, 11 JUN 2026 to 09 JUL 2026

SW-2, 11 JUN 2026 to 09 JUL 2026