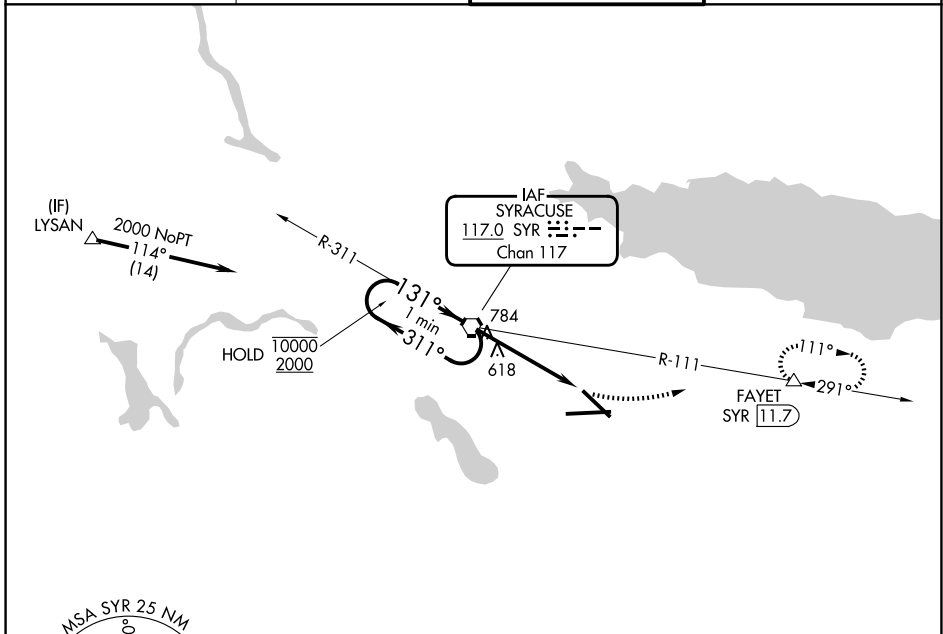


VORTAC SYR 117.0 Chan 117	APP CRS 131°	Rwy Ldg TDZE Apt Elev 417 421	7499
---	------------------------	---	-------------

VOR RWY 15

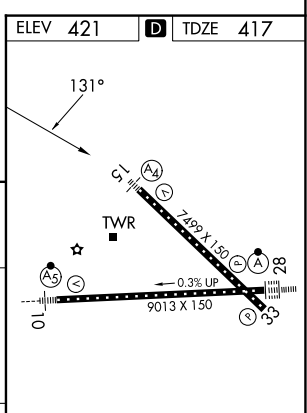
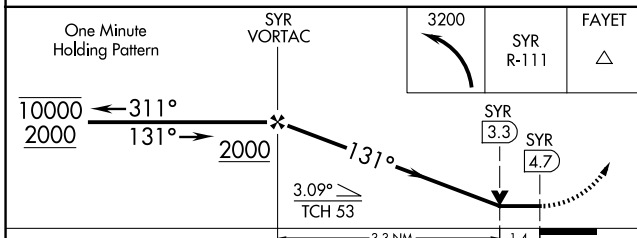
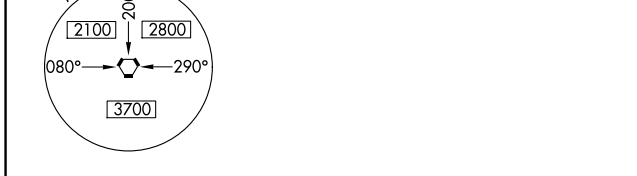
SYRACUSE HANCOCK INTL (SYR)

DME required.		MALS	MISSED APPROACH: Climbing left turn to 3200 on SYR VORTAC R-111 to FAYET/11.7 DME and hold, continue climb-in-hold to 3200.
▼ Rwy 15 helicopter visibility reduction below 3/4 SM NA. ▲ For inop ALS, increase Cat C/D visibility to 1 1/2 SM.		(A4)	
ATIS 124.225	SYRACUSE APP CON 126.125 269.125	SYRACUSE TOWER 120.3 239.0	GND CON 121.7 348.6



NE-2, 11 JUN 2026 to 09 JUL 2026

NE-2, 11 JUN 2026 to 09 JUL 2026



CATEGORY	A	B	C	D
S-15	920-3/4 503 (500-3/4)		920-1 1/4 503 (500-1 1/4)	
CIRCLING	920-1 499 (500-1)		1020-1 1/2 599 (600-1 1/2)	1180-2 1/2 759 (800-2 1/2)

ELEV 421		D TDZE 417	
TDZ/CL Rwy 28		HIRL Rwy 10-28 and 15-33	
FAF to MAP 4.7 NM			
Knots	60	90	120 150 180
Min:Sec	4:42	3:08	2:21 1:53 1:34