

# DADES TWO ARRIVAL (RNAV) Transition Routes

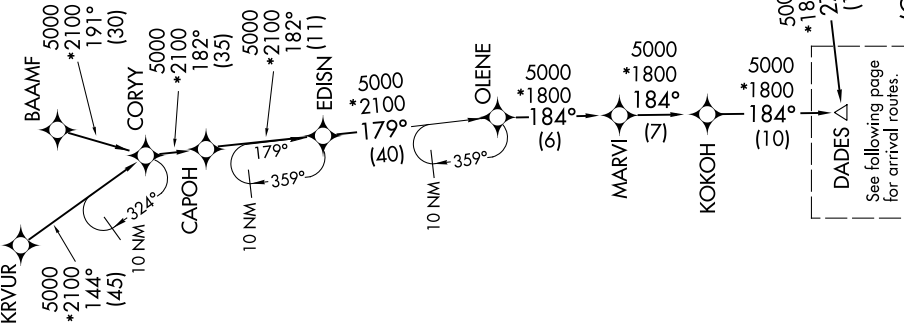
TAMPA, FLORIDA

TAMPA APP CON  
135.5 279.6  
KMCF ATIS  
133.825 270.1  
PIE ATIS  
134.5  
TPA D-ATIS  
126.45



RNAV 1- DME/DME/IRU or GPS.  
RADAR required.

NOTE: Jet and turboprop aircraft only.  
NOTE: KRVUR Transition, EDISN Transition, BEAUX Transition, NICCK Transition, ATC assigned only.



BAAMF TRANSITION (BAAMF.DADES2)  
BEAUX TRANSITION (BEAUX.DADES2)  
EDISN TRANSITION (EDISN.DADES2)  
HIBAC TRANSITION (HIBAC.DADES2)  
KRVUR TRANSITION (KRVUR.DADES2)  
NICCK TRANSITION (NICCK.DADES2)

(CONTINUED ON FOLLOWING PAGE) NOTE: Chart not to scale.

# DADES TWO ARRIVAL (RNAV) Transition Routes

TAMPA, FLORIDA