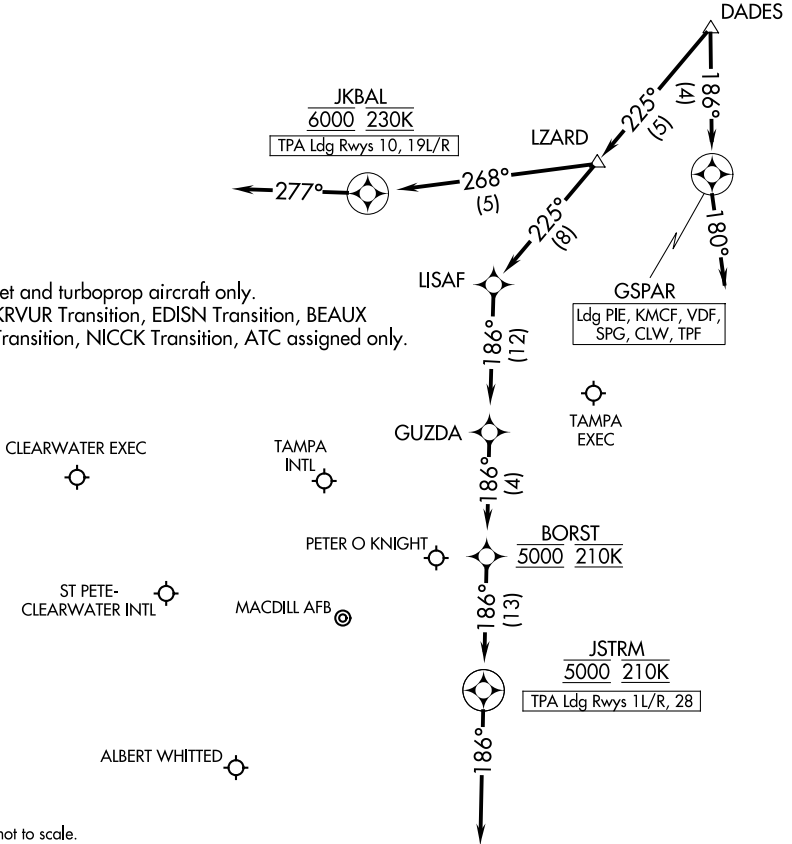


TAMPA APP CON
135.5 279.6
KMCF ATIS
133.825 270.1
PIE ATIS
134.5
TPA D-ATIS
126.45

RNAV 1- DME/DME/IRU or GPS.

RADAR required.

NOTE: Jet and turboprop aircraft only.
NOTE: KRVUR Transition, EDISN Transition, BEAUX Transition, NICCK Transition, ATC assigned only.



NOTE: Chart not to scale.

ARRIVAL ROUTE DESCRIPTION

LANDING TPA RUNWAYS 1L/R, 28: From DADES on track 225° to LZARD, then on track 225° to LISAF, then on track 186° to GUZDA, then on track 186° to cross BORST at 5000 and at 210K, then on track 186° to cross JSTRM at 5000 and at 210K, then on track 186°.
Expect RADAR vectors to final approach course.

LANDING TPA RUNWAYS 10, 19L/R: From DADES on track 225° to LZARD, then on track 268° to cross JKBAL at 6000 and at 230K, then on track 277°.
Expect RADAR vectors to final approach course.

LANDING PIE/CLW/KMCF/SPG/TPF/VDF: From DADES on track 186° to GSPAR, then on track 180°.
Expect RADAR vectors to final approach course.

SE-3, 11 JUN 2026 to 09 JUL 2026

SE-3, 11 JUN 2026 to 09 JUL 2026