

WAAS CH <b>72617</b> <b>W24A</b>	APP CRS <b>237°</b>	Rwy Idg TDZE Apt Elev	<b>4479</b> <b>374</b> <b>374</b>
--	------------------------	-----------------------------	---

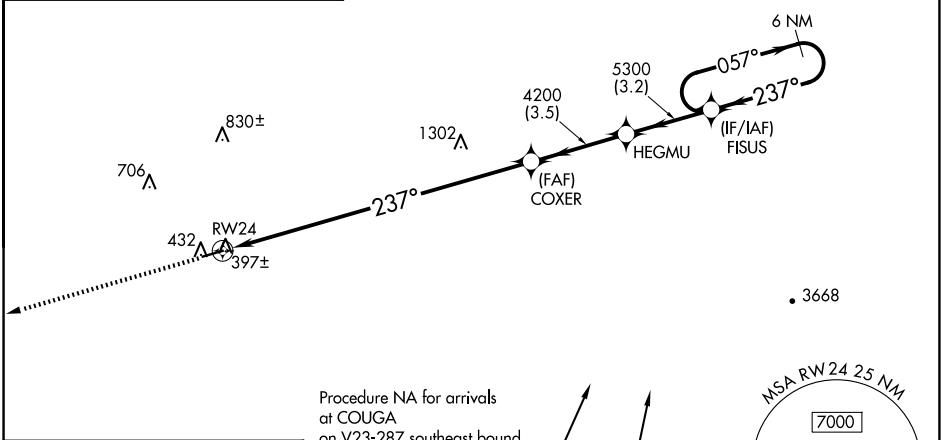
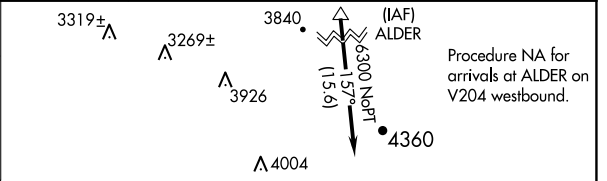
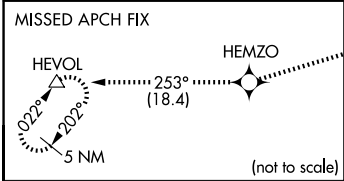
# RNAV (GPS) RWY 24

ED CARLSON MEML FLD/SOUTH LEWIS COUNTY (TDO)

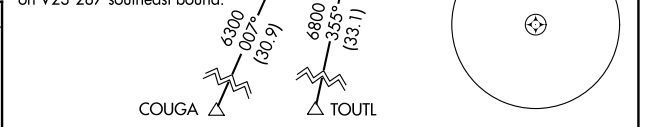
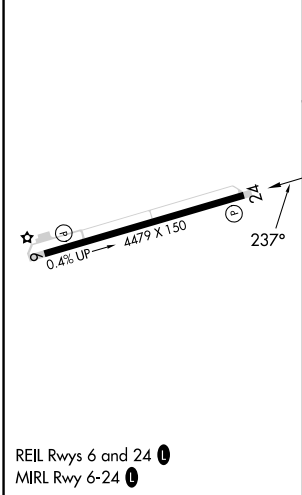
**NA** Baro-VNAV NA. DME/DME RNP-0.3 NA. Helicopter visibility reduction below 1 SM not authorized. Use Chehalis altimeter setting, when not received use Kelseo altimeter setting and increase all DA/MDA 40 feet and increase LPV visibility all Cats ¼ mile. Procedure NA at night.

**MISSED APPROACH:** Climb to 5000 direct HEMZO and on track 253° to HEVOL and hold.

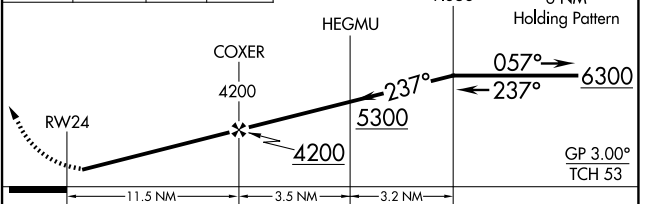
SEATTLE CENTER <b>124.2 317.6</b>	CTAF <b>122.9</b>
--------------------------------------	----------------------



ELEV 374	TDZE 374
----------	----------



5000	HEMZO	HEVOL	tr 253°	△	VGSI and RNAV glidepath not coincident (VGSI Angle 3.00/TCH 44).
------	-------	-------	---------	---	--



CATEGORY	A	B	C	D
LPV DA	685-1 311 (400-1)			
LNAV/VNAV DA	802-1½ 428 (500-1½)			

NW-1, 11 JUN 2026 to 09 JUL 2026

NW-1, 11 JUN 2026 to 09 JUL 2026