

LOC I-TRI <b>109.9</b>	APP CRS <b>230°</b>	Rwy Ldg TDZE Apt Elev	<b>8000</b> <b>1518</b> <b>1519</b>
---------------------------	------------------------	-----------------------------	---

# ILS RWY 23 (SA CAT I)

TRI-CITIES (TRI)

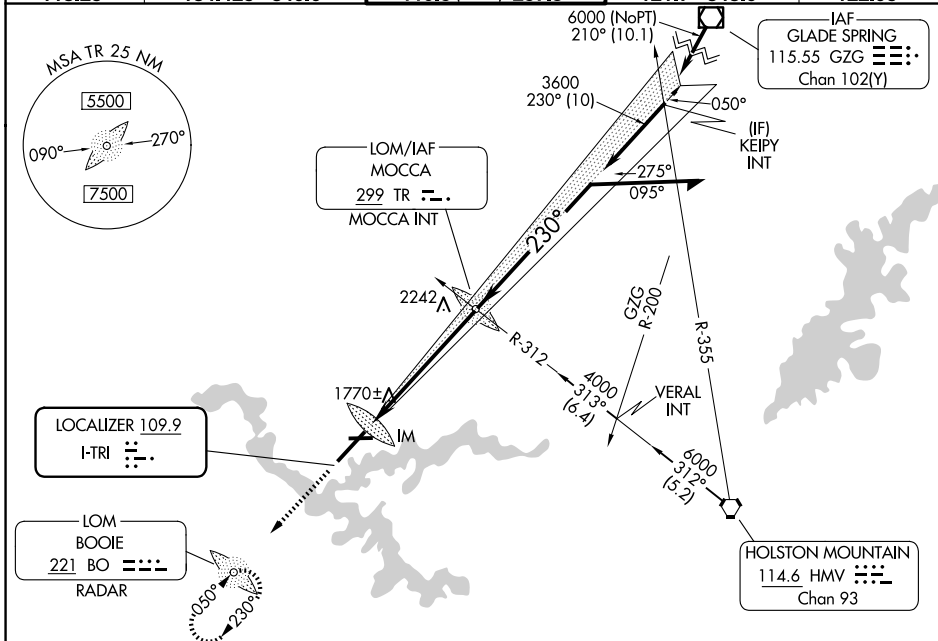
ADF or RADAR required.

Requires specific OPSPEC, MSPEC, or LOA approval and use of HUD to DH. CAUTION:  
 Air traffic control tower 1634 feet MSL located 940 feet right of runway centerline  
 357 feet from runway threshold. Procedure NA when tower closed.

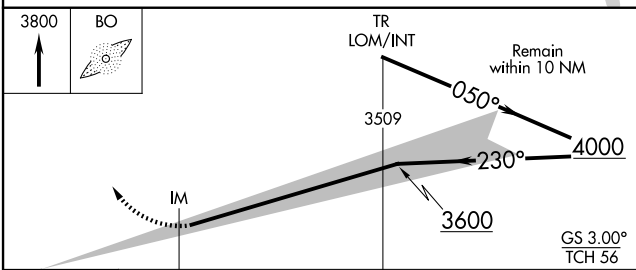
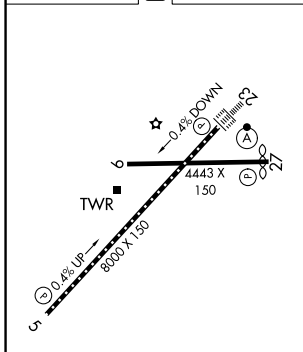


MISSED APPROACH: Climb to 3800 direct BOOIE LOM/RADAR and hold.

ATIS <b>118.25</b>	TRI-CITY APP CON ★ <b>134.425 349.0</b>	TRI-CITY TOWER ★ <b>119.5 (CTAF) 257.8</b>	GND CON <b>121.7 348.6</b>	UNICOM <b>122.95</b>
-----------------------	--	---	-------------------------------	-------------------------



ELEV 1519	<b>D</b>	TDZE 1518
-----------	----------	-----------



1050'	6 NM			
CATEGORY	A	B	C	D
S-ILS 23	RA 192/16 150 DA 1668			

## SA CATEGORY I ILS - SPECIAL AIRCREW & AIRCRAFT CERTIFICATION REQUIRED

REIL Rwy 5 and 27  
 TDZL/RCLS Rwy 23  
 HIRL Rwy 5-23  
 MIRL Rwy 9-27

SE-1, 11 JUN 2026 to 09 JUL 2026

SE-1, 11 JUN 2026 to 09 JUL 2026