

WAAS CH <b>77626</b> <b>W23A</b>	APP CRS <b>230°</b>	Rwy Ldg TDZE Apt Elev	<b>8000</b> <b>1518</b> <b>1519</b>
--	------------------------	-----------------------------	---

# RNAV (GPS) RWY 23

TRI-CITIES (TRI)

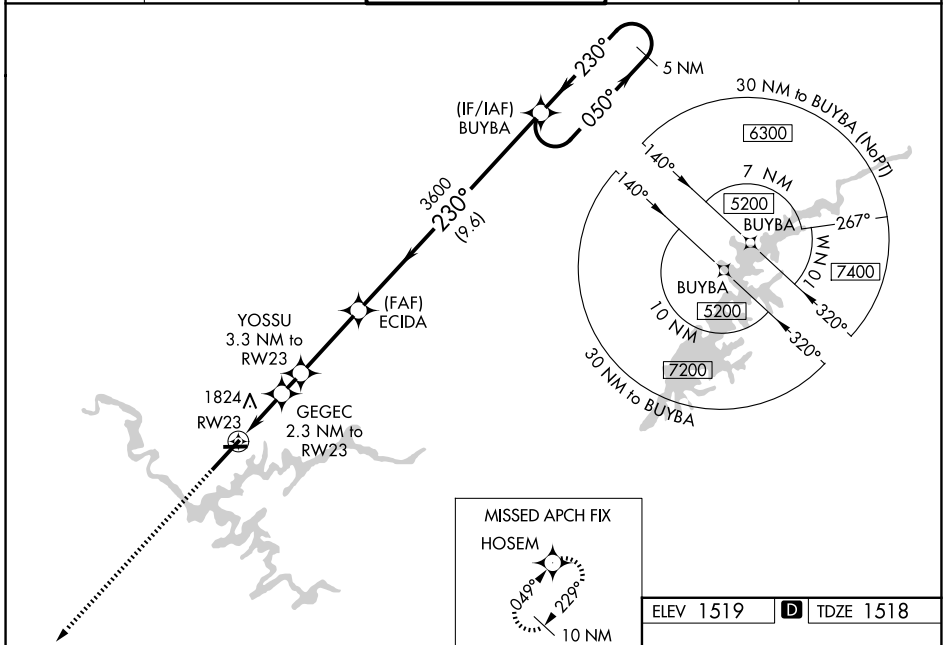
RNP APCH.

**▽** For uncompensated Baro-VNAV systems, LNAV/VNAV NA below -13°C (9°F) or above 34°C (93°F). Circling NA NW of Rwy 9-23. For inoperative ALS, increase LNAV Cats C and D visibility to 1½ SM. Circling Rwy 9 NA at night.



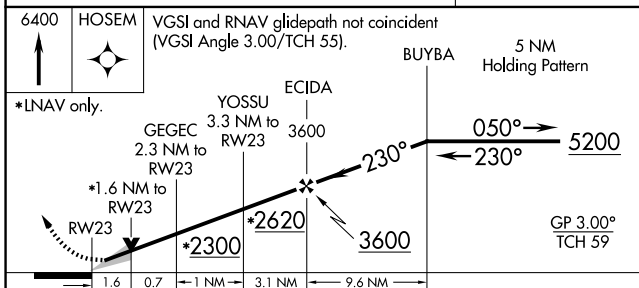
**MISSED APPROACH:**  
Climb to 6400 direct HOSEM and hold, continue climb-in-hold to 6400.

ATIS <b>118.25</b>	TRI-CITY APP CON ★ <b>134.425 349.0</b>	TRI-CITY TOWER ★ <b>119.5 (CTAF) 257.8</b>	GND CON <b>121.7 348.6</b>	UNICOM <b>122.95</b>
-----------------------	--	---	-------------------------------	-------------------------



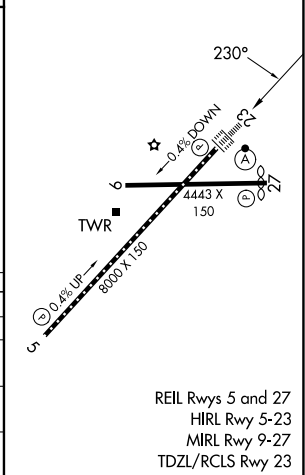
SE-1, 11 JUN 2026 to 09 JUL 2026

SE-1, 11 JUN 2026 to 09 JUL 2026



ELEV 1519	<b>D</b> TDZE 1518
-----------	--------------------

6400	HOSEM	VGSi and RNAV glidepath not coincident (VGSi Angle 3.00/TCH 55).			
*LNAV only.		YOSSU 3.3 NM to RW23	ECIDA 3600	BUYBA	5 NM Holding Pattern
		GEGEC 2.3 NM to RW23			
		*1.6 NM to RW23	*2620	3600	5200
		1.6 0.7 1.1 NM	3.1 NM	9.6 NM	
CATEGORY		A	B	C	D
LPV DA			1718/18	200 (200-½)	
LNAV/VNAV DA			2160-1¾	642 (700-1¾)	
LNAV MDA		2080/24	562 (600-½)	2080-1¼	562 (600-1¼)
CIRCLING		2120-1 601 (700-1)	2180-1 661 (700-1)	2300-2¼ 781 (800-2¼)	2500-3 981 (1000-3)



REIL Rws 5 and 27  
HIRL Rwy 5-23  
MIRL Rwy 9-27  
TDZL/RCLS Rwy 23