

(TRI3.TRI) 24081

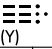
AL-426 (FAA)

TRI-CITIES (TRI)

# TRICITIES THREE DEPARTURE (OBSTACLE)

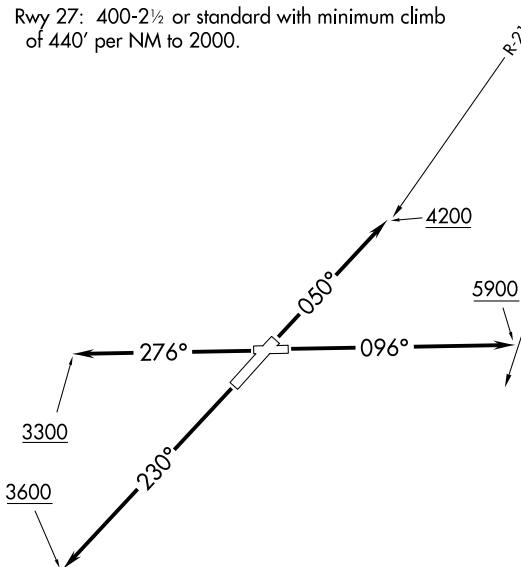
BRISTOL/JOHNSON/KINGSPORT, TENNESSEE

ATIS  
 118.25  
 APP CON ★  
 134.425 349.0  
 TRI CITY TOWER ★  
 119.5 (CTAF) 257.8  
 GND CON  
 121.7 348.6  
 UNICOM  
 122.95

GLADE SPRING  
 115.55 GZG   
 Chan 102 (Y)

### TAKEOFF MINIMUMS

- Rwy 5: Standard with minimum climb of 250' per NM to 2500 or 1100-3 for climb in visual conditions.
- Rwy 9: 200-1% or standard with minimum climb of 215' per NM to 2000, or alternatively, with standard takeoff minimums and a normal 200' per NM climb gradient, takeoff must occur no later than 1500' prior to DER.
- Rwy 23: 200-1% with minimum climb of 220' per NM to 4300 or standard with minimum climb of 370' per NM to 2300 or 1100-3 for climb in visual conditions.
- Rwy 27: 400-2½ or standard with minimum climb of 440' per NM to 2000.



NOTE: Chart not to scale.

### DEPARTURE ROUTE DESCRIPTION

- TAKEOFF RWY 5: Climb heading 050° to intercept GZG VOR/DME R-217 northeast bound to 4200 before proceeding on course.
- TAKEOFF RWY 9: Climb heading 096° to intercept GZG VOR/DME R-200 northbound to 5900 before proceeding on course.
- TAKEOFF RWY 23: Climb heading 230° to 3600 before proceeding on course.
- TAKEOFF RWY 27: Climb heading 276° to 3300 before proceeding on course.

VCOA RWY 5, 23: Obtain ATC approval for VCOA when requesting IFR clearance. Climb in visual conditions to cross Tri-Cities Airport at or above 2500 then climb to 3500 via GZG VOR/DME R-217 northeast bound before proceeding on course.

# TRICITIES THREE DEPARTURE (OBSTACLE)

BRISTOL/JOHNSON/KINGSPORT, TENNESSEE

TRI-CITIES (TRI)

(TRI3.TRI) 07DEC17

SE-1, 11 JUN 2026 to 09 JUL 2026

SE-1, 11 JUN 2026 to 09 JUL 2026