

# HI-TACAN Z RWY 13

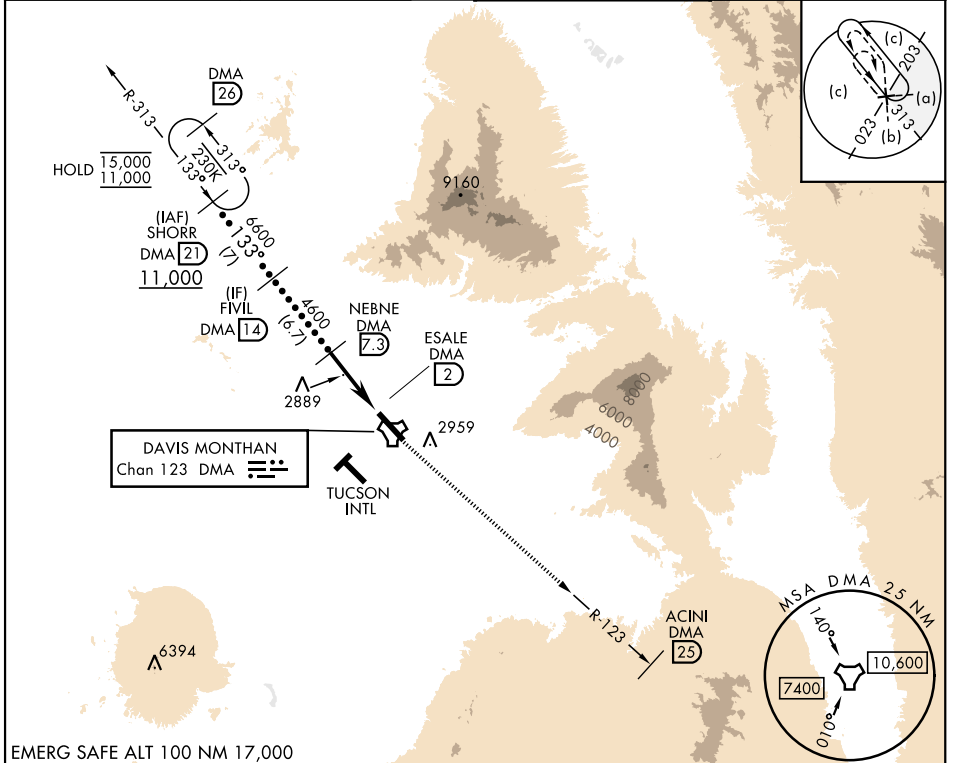
TACAN DMA Chan <b>123</b>	APCH CRS <b>133°</b>	Rwy Idg <b>13,645</b> TDZE <b>2615</b> Arprt Elev <b>2704</b>
------------------------------	-------------------------	---

[USAF]

DAVIS-MONTHAN AFB (KDMA)

RNAV or RADAR required. MISSED APPROACH: Climbing to 8000 intercept DMA TACAN R-123 to ACINI. Expect RADAR vectors.

ATIS ★ <b>132.3 270.1</b>	TUCSON APP CON 066°-274° <b>119.4 318.1</b> 275°-065° <b>125.1 269.55</b>	TOWER <b>118.85 253.5</b>	GND CON <b>121.8 275.8</b>
------------------------------	---	------------------------------	-------------------------------



EMERG SAFE ALT 100 NM 17,000

		8000 DMA R-123	ACINI DMA 25	ELEV 2704	TDZE 2615
	FIVIL DMA 14 (6600)	NEBNE DMA 7.3 (4600)	DMA ESALE DMA 2 (2889)	DMA TACAN	
	133°	3.17°	TCH 58	5.3 NM	0.5 NM
CATEGORY	C	D	E		
S-13	3160-1½	545 (500-1½)			
CIRCLING *	3260-1½ 556 (600-1½)	3420-2¼ 716 (800-2¼)	3460-2¾ 756 (800-2¾)		
				HIRL Rwy 13-31	REIL Rwy 13

# HI-TACAN Z RWY 13

SW-4, 11 JUN 2026 to 09 JUL 2026

SW-4, 11 JUN 2026 to 09 JUL 2026