

TACAN Y RWY 13

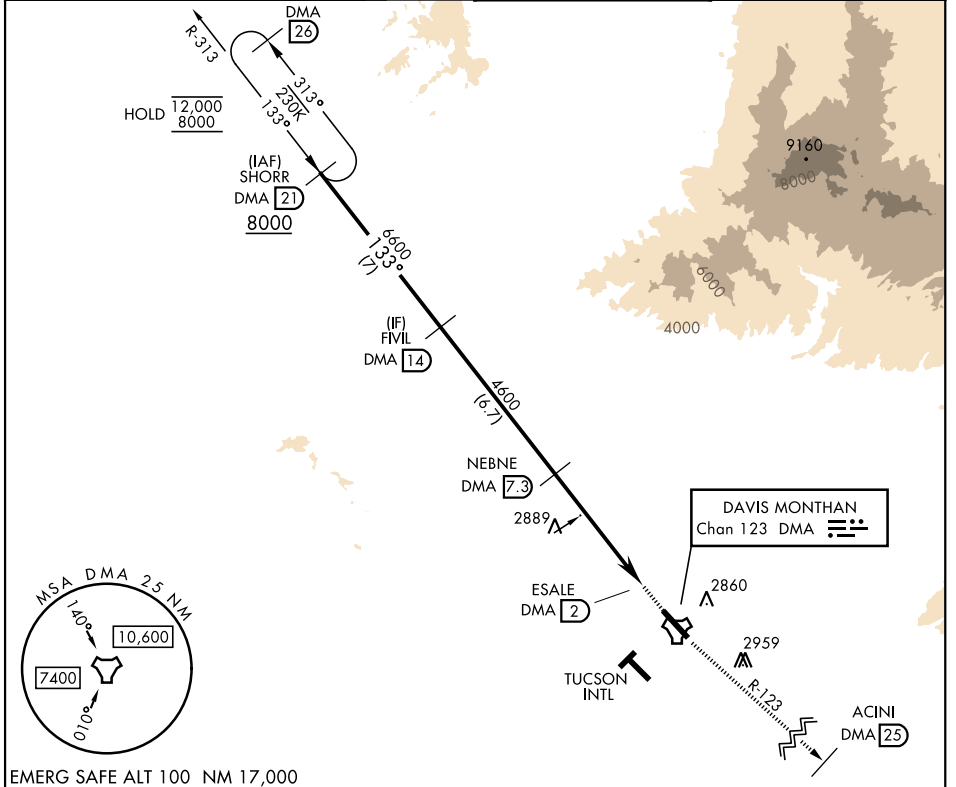
TACAN DMA Chan 123	APCH CRS 133°	Rwy Ldg 13,645 TDZE 2615 Arprt Elev 2704
------------------------------	-------------------------	---

[USAF]

DAVIS-MONTHAN AFB (KDMA)

RNAV or RADAR required. MISSED APPROACH: Climb to 8000 intercept DMA TACAN R-123 to ACINI. Expect RADAR vectors.

ATIS ★ 132.3 270.1	TUCSON APP CON 066°-274° 119.4 318.1 275°-065° 125.1 269.55	TOWER 118.85 253.5	GND CON 121.8 275.8
------------------------------	---	------------------------------	-------------------------------



EMERG SAFE ALT 100 NM 17,000

	FIVIL DMA 14	NEBNE DMA 7.3	DMA 3.1	ESALE DMA 2	DMA TACAN	ELEV 2704	TDZE 2615
	6600	4600	3.17°	TCH 58	0.5 NM		
			5.3 NM				
CATEGORY	A	B	C	D	E		
S-13	3160/55 545 (500-1)		3160-1½	545	(500-1½)		
CIRCLING *	3200-1 496 (500-1)	3220-1 516 (600-1)	3260-1½ 556 (600-1½)	3420-2¼ 716 (800-2¼)	3460-2¾ 756 (800-2¾)	HIRL Rwy 13-31 REL Rwy 13	

TACAN Y RWY 13

SW-4, 11 JUN 2026 to 09 JUL 2026

SW-4, 11 JUN 2026 to 09 JUL 2026