

TUCSON, ARIZONA


TACAN Y RWY 31

TACAN DMA Chan 123	APCH CRS 302°	Rwy Ildg 13,645 TDZE 2704 Arpt Elev 2704
------------------------------	-------------------------	---

[USAF]

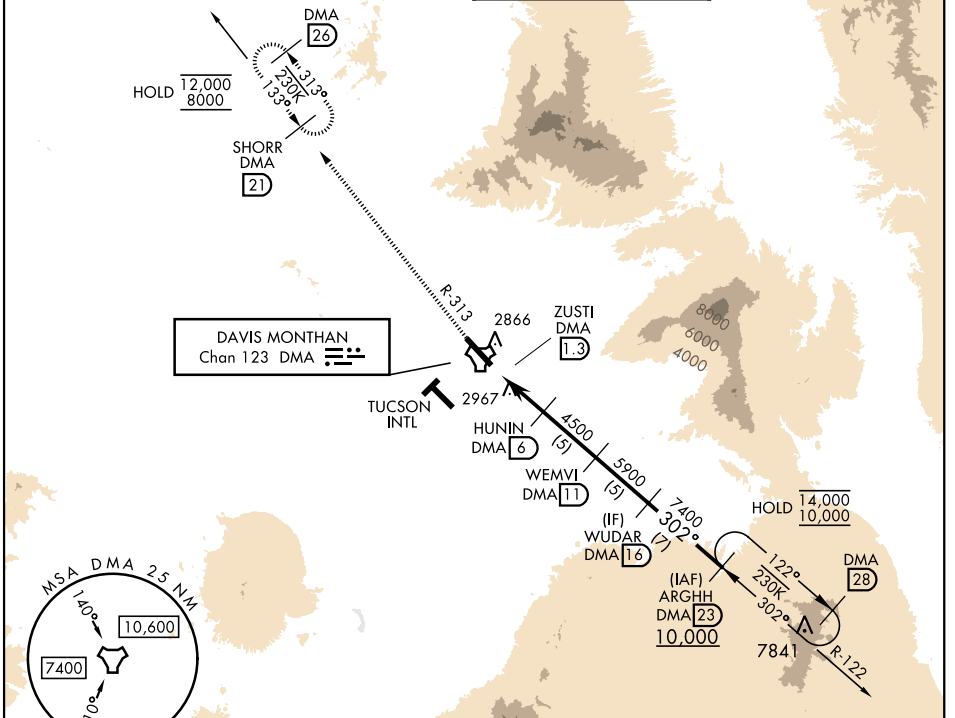
DAVIS-MONTHAN AFB (KDMA)

▼ * When ALS inop, increase CAT AB RVR to 55 vis to 1 mile; CAT CDE vis to 2 miles.
 ** Circling not authorized SW of Rwy 13-31.

ALSF-1 

MISSED APPROACH: Climb to 8000, intercept DMA TACAN R-313 to SHORR and hold, continue climb-in-hold to 8000.

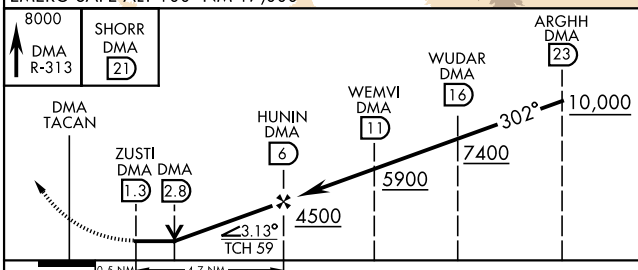
ATIS ★ 132.3 270.1	TUCSON APP CON 066°-274° 119.4 318.1 275°-065° 125.1 269.55	TOWER 118.85 253.5	GND CON 121.8 275.8
------------------------------	---	------------------------------	-------------------------------



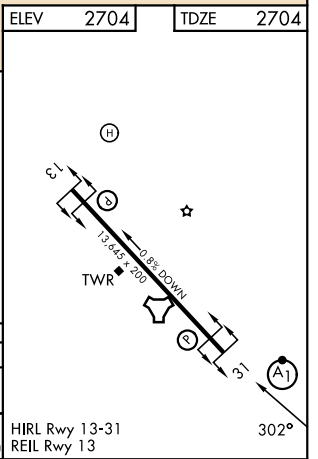
SW-4, 11 JUN 2026 to 09 JUL 2026

SW-4, 11 JUN 2026 to 09 JUL 2026

ELEV	2704	TDZE	2704
------	------	------	------



CATEGORY	A	B	C	D	E
S-31*	3420/24	716 (800-½)	3420-1⅞	716 (800-1⅞)	
CIRCLING**	3420-1	716 (800-1)	3420-2 716 (800-2)	3420-2¼ 716 (800-2¼)	3460-2¾ 756 (800-2¾)



TUCSON, ARIZONA
Orig 11JUN26

32°10'N-110°53'W

DAVIS-MONTHAN AFB (KDMA)

TACAN Y RWY 31