

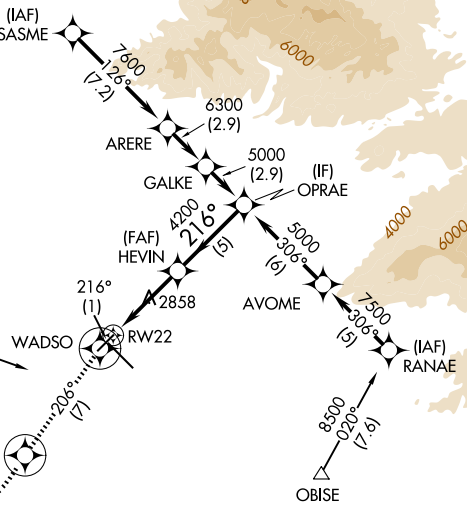
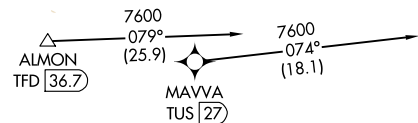
APP CRS 216°	Rwy Ldg TDZE Apt Elev	6000 2572 2643
------------------------	-----------------------------	---

RNAV (GPS) RWY 22

TUCSON INTL (TUS)

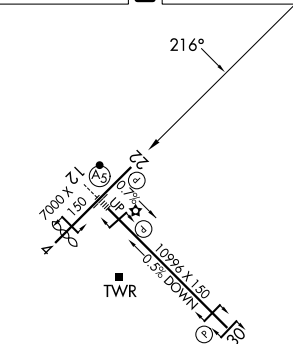
RNP APCH - GPS.		MISSED APPROACH: Climb to 6000 on track 216° to WADSO and 206° track to LIKLE and right turn direct RYN NDB and hold, continue climb-in-hold to 6000.	
<p>▼ Rwy 22 helicopter visibility reduction below ¼ SM NA. ▲ For uncompensated Baro-VNAV systems, LNAV/VNAV NA below -2°C or above 54°C.</p>		ATIS 123.8 279.65	TUCSON APP CON 119.4 318.1
		TUCSON TOWER 118.3 257.8	GND CON 120.025 348.6

Procedure NA for arrivals at ALMON on V66-105 northwest bound.



Procedure NA for arrivals at OBISE on V66-T310 northwest bound.

ELEV 2643	D	TDZE 2572
-----------	----------	-----------



6000	WADSO	206° tr	LIKLE	RYN	OPRAE			
↑ tr 216°								
HEVIN		4200		5000				
RW22		1.7 NM to RW22		GP 3.00° TCH 50				
1.7		3.2 NM		5 NM				
CATEGORY	A		B		C		D	
LNAV/VNAV DA	3145-2		573 (600-2)					
LNAV MDA	3160-1 588 (600-1)		3160-1¾ 588 (600-1¾)					
CIRCLING	3160-1 517 (600-1)		3220-1 577 (600-1)		3220-1¾ 577 (600-1¾)		3660-3 1017 (1100-3)	

HIRL Rwy 12-30
MIRL Rwy 4-22
REIL Rws 22 and 30

SW-4, 11 JUN 2026 to 09 JUL 2026

SW-4, 11 JUN 2026 to 09 JUL 2026