

VALDOSTA, GEORGIA

HI-ILS Z or LOC Z RWY 1R

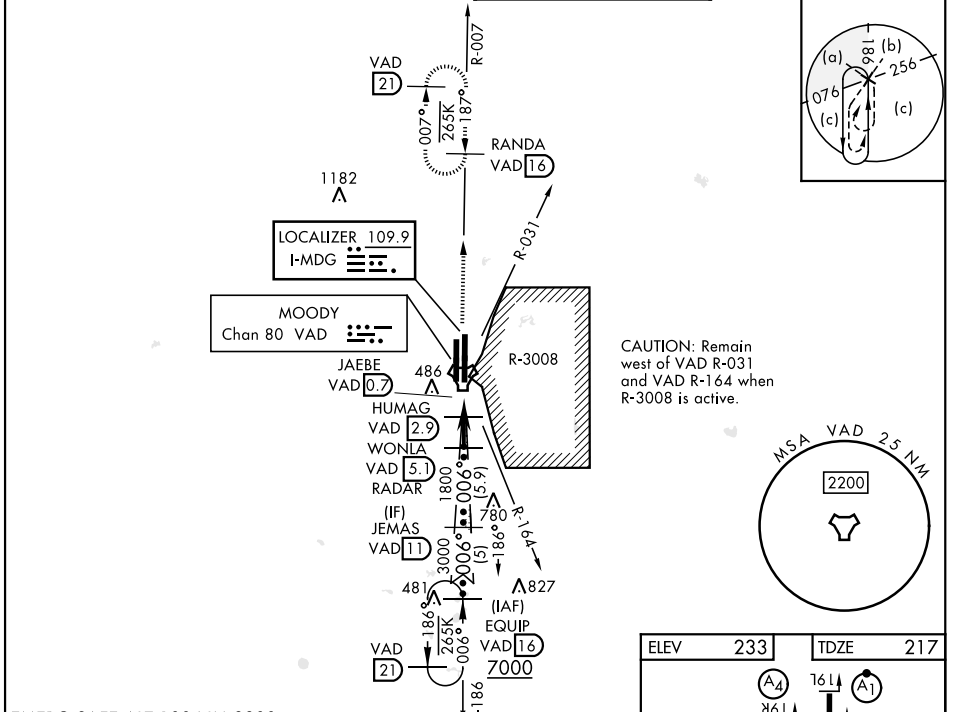
LOC I-MDG 109.9	APCH CRS 006°	Rwy Idg TDZE Arpt Elev 9300 217 233
---------------------------	-------------------------	---

[USAF]

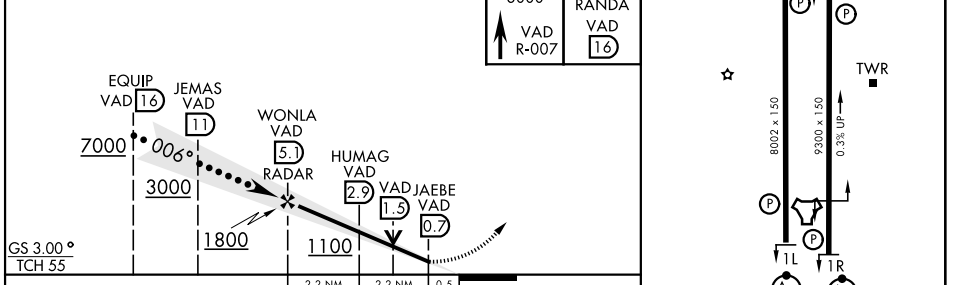
MOODY AFB (KVAD)

RADAR or DME required	ALSIF-1 (A1)	MISSED APPROACH: Climb to 3000 on VAD TACAN R-007 to RANDA and hold.
-----------------------	------------------------	--

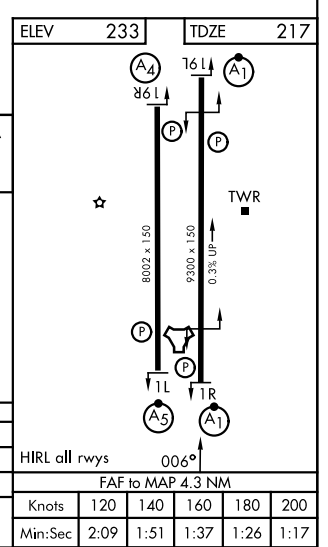
ATIS ★ 142.6 273.5	VALDOSTA APP CON ★ 126.6 285.6	TOWER ★ 128.45 (CTAF) 257.625	GND CON 138.95 275.8
------------------------------	--	---	--------------------------------



EMERG SAFE ALT 100 NM 3300



CATEGORY	C	D	E
S-ILS 1R*	417/24	200	(200-1/2)
S-LOC 1R**	660/45	443	(500-1/2)
CIRCLING	800-1 1/2 567 (600-1 1/2)	800-2 567 (600-2)	



VALDOSTA, GEORGIA
Orig 27NOV25

30° 58' N-83° 12' W

MOODY AFB (KVAD)

HI-ILS Z or LOC Z RWY 1R

SE-4, 11 JUN 2026 to 09 JUL 2026

SE-4, 11 JUN 2026 to 09 JUL 2026