

# ILS Y or LOC Y RWY 19L

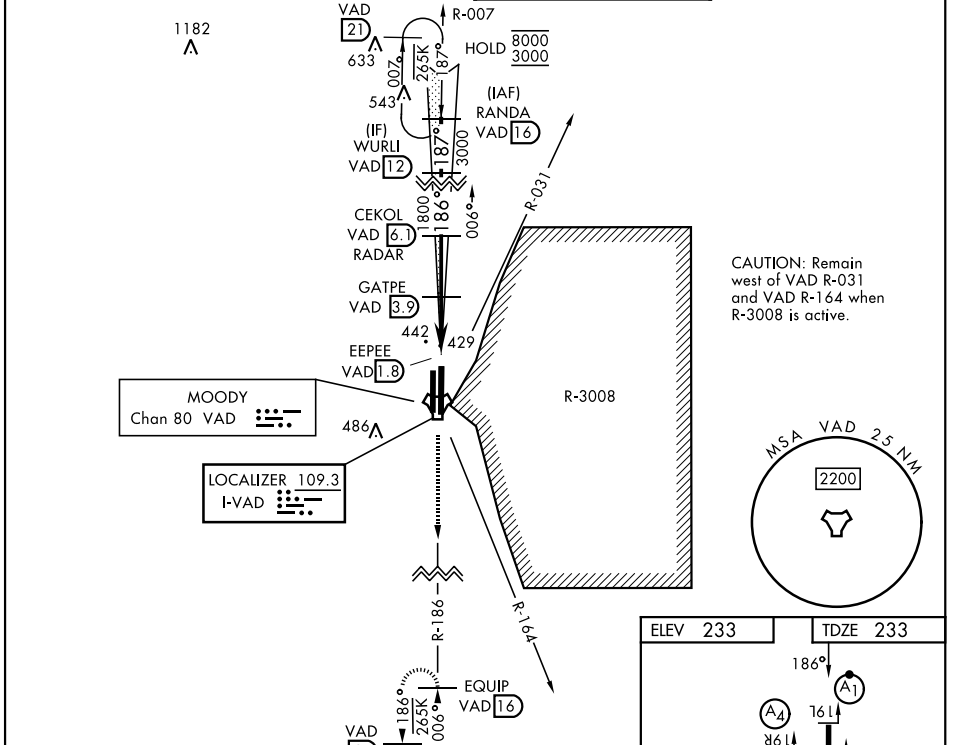
LOC I-VAD <b>109.3</b>	APCH CRS <b>186°</b>	Rwy Idg TDZE Arprt Elev <b>9300</b> <b>233</b> <b>233</b>
---------------------------	-------------------------	--

[USAF]

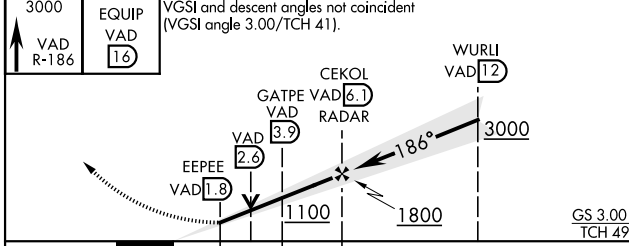
MOODY AFB (KVAD)

RADAR or DME required		ALS-F1 <b>(A1)</b>	MISSED APPROACH: Climb to 3000 on VAD TACAN R-186 to EQUIP and hold.
* When ALS inop, increase RVR to 40 and vis to 3/4 mile. ** When ALS inop, increase CAT AB RVR to 55 and vis to 1 mile, CAT CDE vis to 1 1/2 miles.			

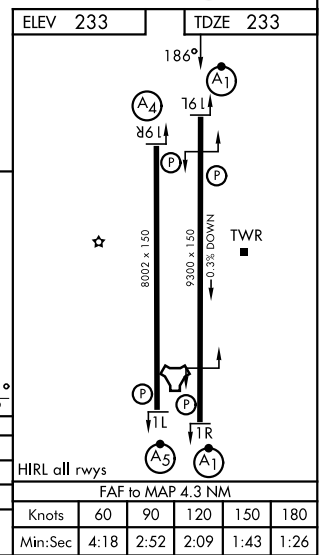
ATIS* <b>142.6 273.5</b>	VALDOSTA APP CON* <b>126.6 285.6</b>	TOWER* <b>128.45 (CTAF) 257.625</b>	GND CON <b>138.95 275.8</b>
-----------------------------	---	--	--------------------------------



EMERG SAFE ALT 100 NM 3300



CATEGORY	A	B	C	D	E
S-ILS 19L*	433/24		200 (200-1/2)		
S-LOC 19L**	680/24	447 (500-1/2)	680/45	447 (500-3/8)	
CIRCLING	760-1	527 (600-1)	800-1 1/2	567 (600-1 1/2)	800-2 567 (600-2)



# ILS Y or LOC Y RWY 19L

SE-4, 11 JUN 2026 to 09 JUL 2026

SE-4, 11 JUN 2026 to 09 JUL 2026