

ILS Y or LOC Y RWY 1R

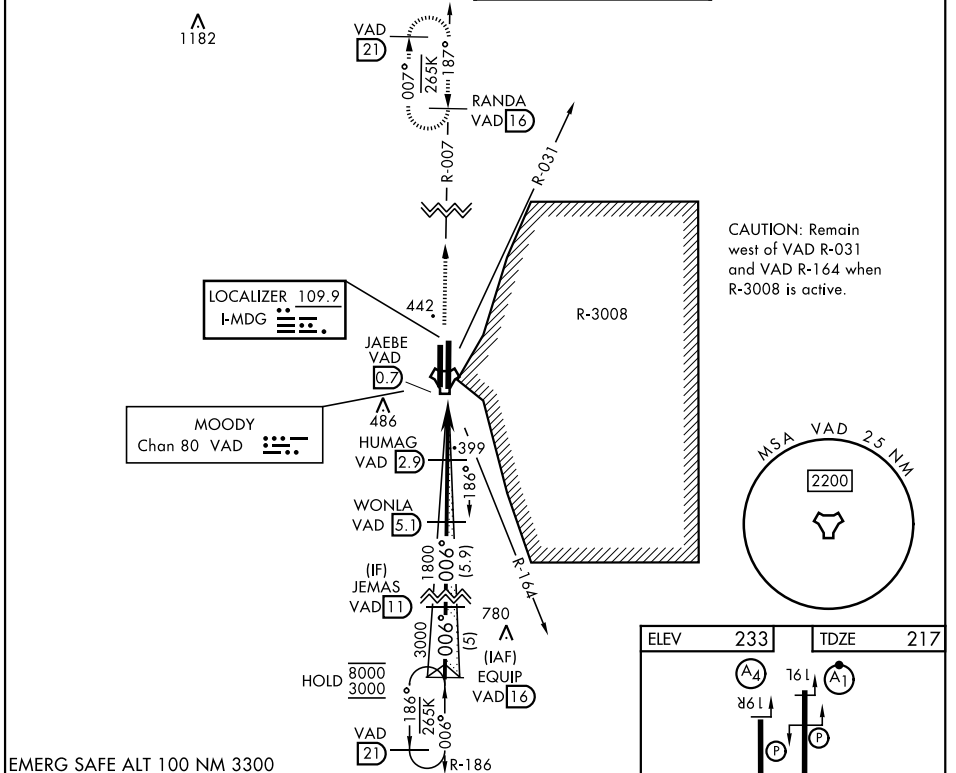
LOC I-MDG 109.9	APCH CRS 006°	Rwy Idg TDZE Arprt Elev 9300 217 233
---------------------------	-------------------------	--

[USAF]

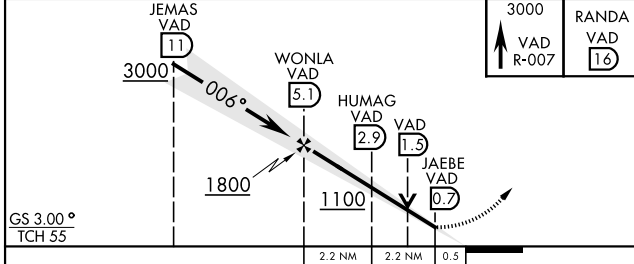
MOODY AFB (KVAD)

RADAR or DME required		ALSF-1 (A1)	MISSED APPROACH: Climb to 3000 on VAD TACAN R-007 to RANDA and hold.
* When ALS inop, increase RVR to 40 and vis to 3/4 mile. ** When ALS inop, increase RVR CAT AB to 55 and vis to 1 mile, RVR CAT CDE vis to 1 3/8 miles.			

ATIS ★ 142.6 273.5	VALDOSTA APP CON ★ 126.6 285.6	TOWER ★ 128.45 (CTAF) 257.625	GND CON 138.95 275.8
------------------------------	--	---	--------------------------------



EMERG SAFE ALT 100 NM 3300



ELEV	233	TDZE	217
HIRL all rwys 006°			
FAF to MAP 4.3 NM			
Knots	60	90	120 150 180
Min:Sec	4:18	2:52	2:09 1:43 1:26

ILS Y or LOC Y RWY 1R

SE-4, 11 JUN 2026 to 09 JUL 2026

SE-4, 11 JUN 2026 to 09 JUL 2026