

VALDOSTA, GEORGIA

RNAV (GPS) RWY 19L

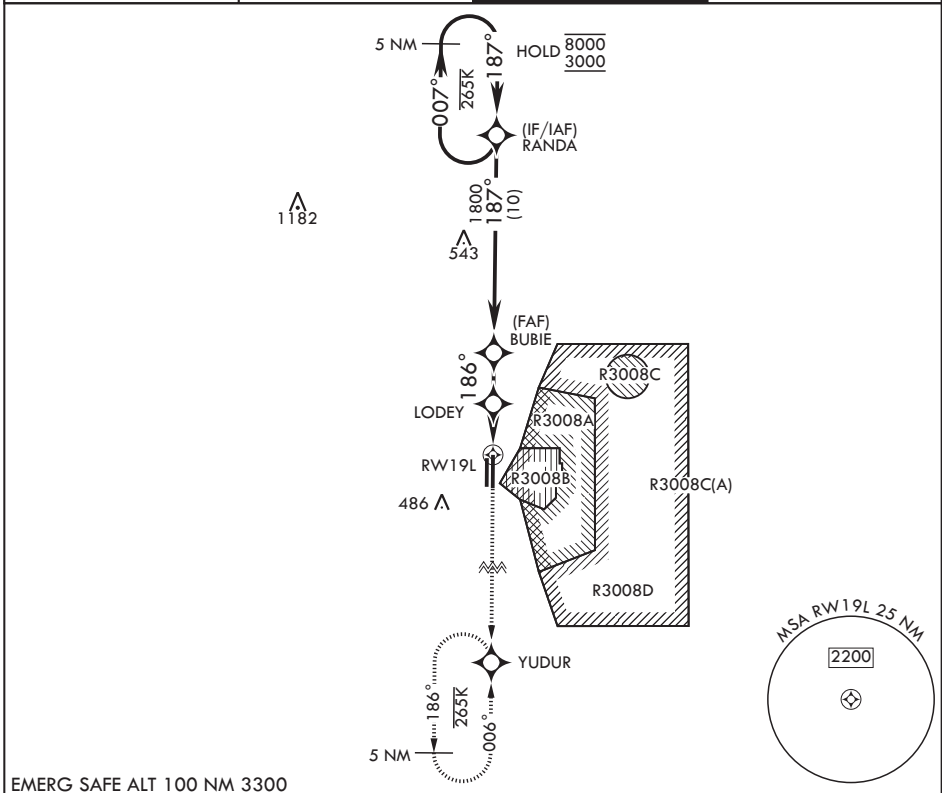
APCH CRS 186°	Rwy Idg 9300
	TDZE 233
	Arprt Elev 233

(USAF)

MOODY AFB (KVAD)

RNP APCH-GPS	ALSF-1	MISSED APPROACH: Climb to 3000 direct YUDUR and hold.
<p>▼ * When ALS inop, increase CAT AB RVR to 55 and vis to 1 mile, CAT CDE vis to 1 3/8 miles.</p>		

ATIS* 142.6 273.5	VALDOSTA APP CON* 126.6 285.6	TOWER* 128.45 (CTAF) 257.625	GND CON 138.95 275.8
-----------------------------	---	--	--------------------------------



EMERG SAFE ALT 100 NM 3300

<p>3000 YUDUR </p> <p>ELEV 233</p> <p>186° TDZE 233</p> <p>BCN</p> <p>TWR</p> <p>8002 x 150</p> <p>150 x 0035</p> <p>9003</p> <p>0.3% DOWN</p> <p>16L</p> <p>16R</p> <p>11L</p> <p>11R</p> <p>A4</p> <p>A1</p> <p>A5</p> <p>A1</p>	<p>YUDUR</p> <p>RANDA</p> <p>BUBIE</p> <p>LODEY</p> <p>RWY 19L</p> <p>1.2 NM to RWY 19L</p> <p>1800</p> <p>1000</p> <p>≤ 3.07°</p> <p>TCH 41</p> <p>2.4 NM</p> <p>2.3 NM</p> <p>5 NM Holding Pattern</p> <p>8000</p> <p>3000</p>																		
<table border="1"> <thead> <tr> <th>CATEGORY</th> <th>A</th> <th>B</th> <th>C</th> <th>D</th> <th>E</th> </tr> </thead> <tbody> <tr> <td>RNAV MDA*</td> <td>700/24</td> <td>467 (500-½)</td> <td>700/50</td> <td>467</td> <td>(500-1)</td> </tr> <tr> <td>CIRCLING</td> <td>760-1</td> <td>527 (600-1)</td> <td>800-1½</td> <td>567 (600-1½)</td> <td>800-2 567 (600-2)</td> </tr> </tbody> </table> <p>HIRL all rwys</p>	CATEGORY	A	B	C	D	E	RNAV MDA*	700/24	467 (500-½)	700/50	467	(500-1)	CIRCLING	760-1	527 (600-1)	800-1½	567 (600-1½)	800-2 567 (600-2)	
CATEGORY	A	B	C	D	E														
RNAV MDA*	700/24	467 (500-½)	700/50	467	(500-1)														
CIRCLING	760-1	527 (600-1)	800-1½	567 (600-1½)	800-2 567 (600-2)														

VALDOSTA, GEORGIA

30°58'N - 83°12'W

MOODY AFB (KVAD)

Orig 27NOV25

RNAV (GPS) RWY 19L

SE-4, 11 JUN 2026 to 09 JUL 2026

SE-4, 11 JUN 2026 to 09 JUL 2026