

VALDOSTA, GEORGIA

RNAV (GPS) RWY 19R

APCH CRS	Rwy Idg	8002
186°	TDZE	231
	Arprt Elev	233

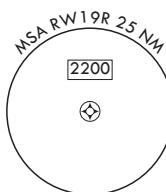
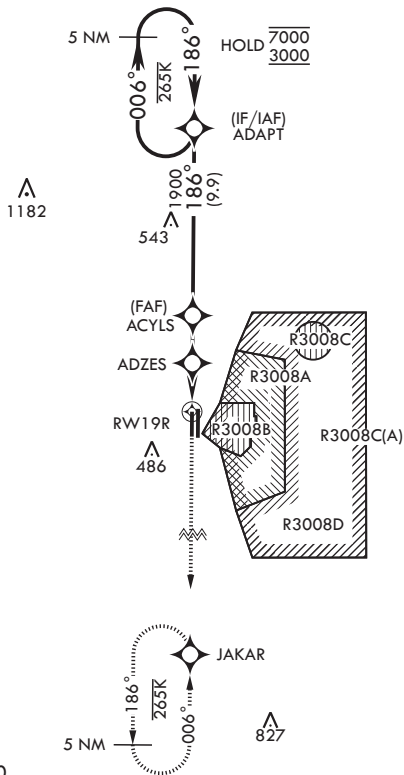
(USAF)

MOODY AFB (KVAD)

RNP APCH-GPS	MALS (A4)	MISSED APPROACH: Climb to 3000 direct JAKAR and hold.
<p>▼ * When ALS inop, increase CAT AB RVR to 55, vis to 1 mile; CAT CDE vis to 1 3/8 miles.</p>		

ATIS* 142.6 273.5	VALDOSTA APP CON* 126.6 285.6	TOWER* 128.45 (CTAF) 257.625	GND CON 138.95 275.8
-----------------------------	---	--	--------------------------------

Rwy 19R helicopter visibility reduction below RVR 40 not authorized.



EMERG SAFE ALT 100 NM 3300

3000 ↑ JAKAR	ADAPT 5 NM Holding Pattern 7000 3000					ELEV 233	TDZE 231
RWY 19R 1.3 NM to RWY 19R		ADZES 1100 ≤ 3.00° TCH 50	ACYLS 186° 1900	006° 186°		BCN	186° A1 761 186 P 150 8002 x 150 150 150 9000 x 300 9 0.3% UP TWR P P 1R1 A5 A1
2.6 NM		2.5 NM					
CATEGORY	A	B	C	D	E		
LNAV MDA*	700/40	469 (500-¾)	700/50	469	(500-1)		
CIRCLING	760-1	527 (600-1)	800-1½ 567 (600-1½)	800-2	567 (600-2)	HIRL all rwys	

VALDOSTA, GEORGIA

30°58'N - 83°12'W

MOODY AFB (KVAD)

Orig 27NOV25

RNAV (GPS) RWY 19R

SE-4, 11 JUN 2026 to 09 JUL 2026

SE-4, 11 JUN 2026 to 09 JUL 2026