

VALDOSTA, GEORGIA

RNAV (GPS) RWY 1R

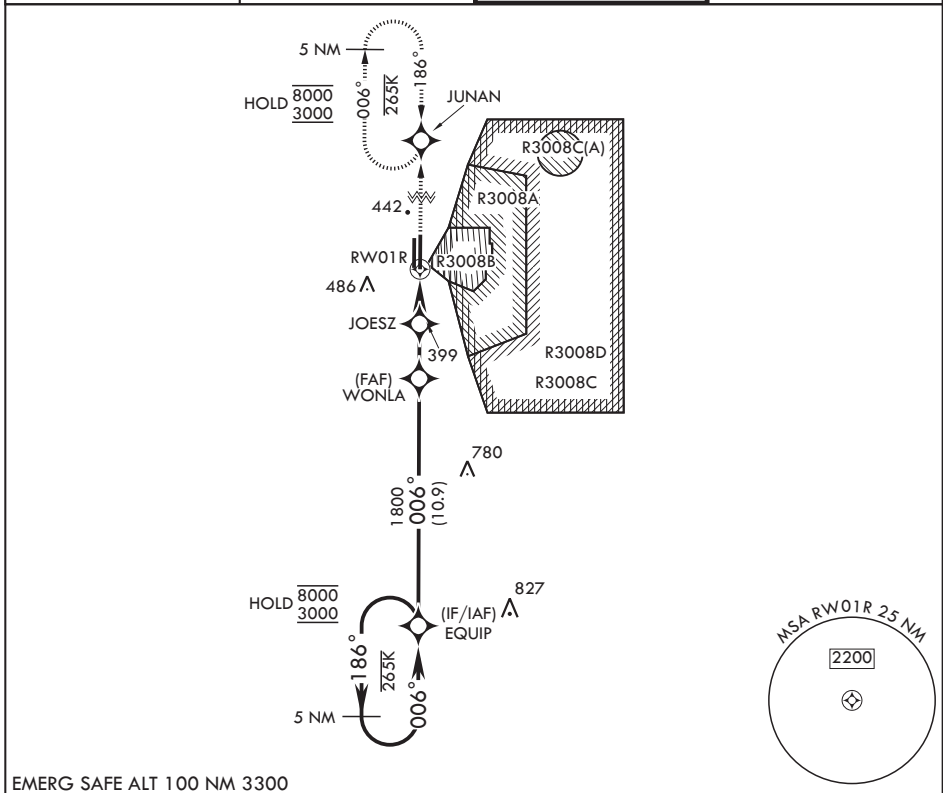
APCH CRS 006°	Rwy Idg TDZE Arpft Elev	9300 217 233
-------------------------	-------------------------------	---

(USAF)

MOODY AFB (KVAD)

RNP APCH-GPS	ALSF-1	MISSED APPROACH: Climb to 3000 direct to JUNAN and hold.
--------------	--------	--

ATIS* 142.6 273.5	VALDOSTA APP CON* 126.6 285.6	TOWER* 128.45 (CTAF) 257.625	GND CON 138.95 275.8
-----------------------------	---	--	--------------------------------



EMERG SAFE ALT 100 NM 3300

5 NM Holding Pattern	EQUIP	3000 JUNAN	ELEV 233	TDZE 217	
8000 3000	← 186° → 006°	↑	⊕		
<p>WONLA</p> <p>1800</p> <p>1000</p> <p>3.00° TCH 54</p> <p>2.4 NM</p> <p>1.3 NM to RW01R</p> <p>2.4 NM</p>		<p>BCN</p> <p>8002 x 1.50</p> <p>2300 x 1.50</p> <p>0.3% UP</p> <p>TWR</p> <p>11L (A5)</p> <p>1R (A1)</p> <p>006°</p>			
CATEGORY	A	B	C	D	E
LNAV MDA*	660/24	443 (500-½)	660/45	443	(500-¾)
CIRCLING	760-1	527 (600-1)	800-1½ 567 (600-1½)	800-2	567 (600-2)

VALDOSTA, GEORGIA

30°58'N - 83°12'W

MOODY AFB (KVAD)

Orig 27NOV25

RNAV (GPS) RWY 1R

SE-4, 11 JUN 2026 to 09 JUL 2026

SE-4, 11 JUN 2026 to 09 JUL 2026