

| | | | |
|--|------------------------|-----------------------------|---|
| WAAS CH 82125 W22A | APP CRS 224° | Rwy Ldg TDZE Apt Elev | 6001 274 279 |
|--|------------------------|-----------------------------|---|

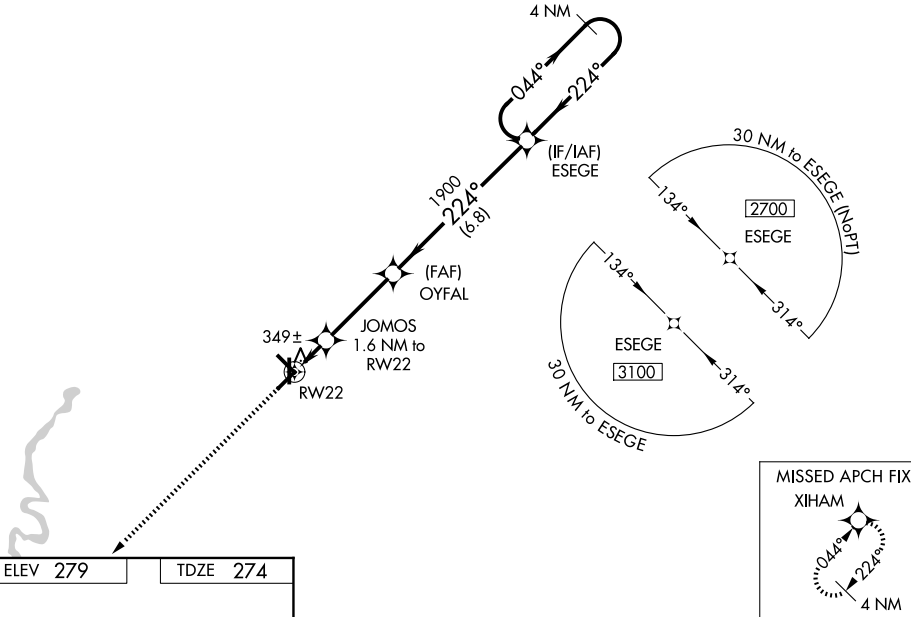
RNAV (GPS) RWY 22

WALNUT RIDGE RGNL (ARG)

⚠ Baro-VNAV NA when using Jonesboro altimeter setting. For uncompensated Baro-VNAV systems, LNAV/VNAV NA below -15°C (5°F) or above 42°C (107°F). DME/DME RNP-0.3 NA. VDP NA with Jonesboro altimeter setting. When local altimeter setting not received, use Jonesboro altimeter setting and increase LPV and LNAV/VNAV DA to 578 feet, and all MDAs 60 feet; increase LNAV Cats C/D visibility 1/8 SM and Circling Cat D visibility 1/4 SM.

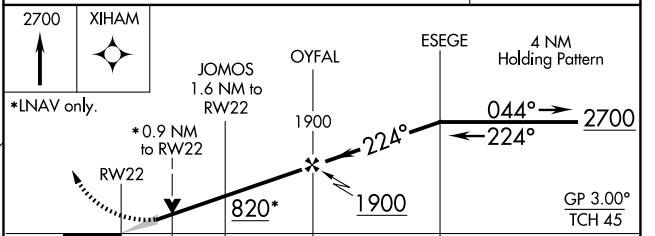
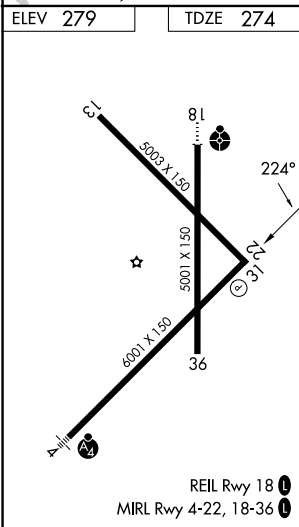
MISSED APPROACH:
Climb to 2700 direct XIHAM and hold.

| | | |
|----------------------------|--|--|
| AWOS-3PT 126.525 | MEMPHIS CENTER 120.075 289.4 | UNICOM 122.8 (CTAF) 📻 |
|----------------------------|--|--|



SC-1, 11 JUN 2026 to 09 JUL 2026

SC-1, 11 JUN 2026 to 09 JUL 2026



| CATEGORY | A | B | C | D |
|--------------|-------|-------------|------------------------|-------------------------|
| LPV DA | | 524-1 | 250 (300-1) | |
| LNAV/VNAV DA | | 524-1 | 250 (300-1) | |
| LNAV MDA | | 600-1 | 326 (400-1) | |
| CIRCLING | 760-1 | 481 (500-1) | 800-1½ 521 (600-1½) | 1000-2¼ 721 (800-2¼) |