

# HI-ILS or LOC Z RWY 33

LOC I-WRB <b>110.1</b>	APCH CRS <b>326°</b>	Rwy ldg <b>12,001</b> TDZE <b>275</b> Arprt Elev <b>294</b>
---------------------------	-------------------------	---

[USAF]

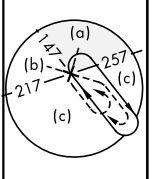
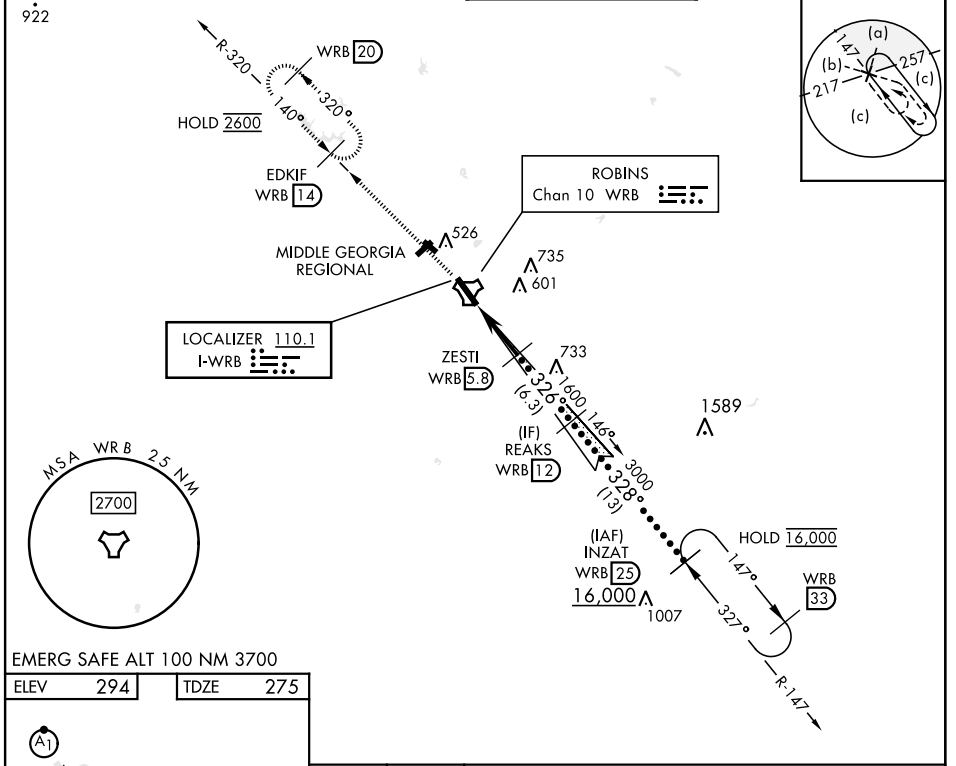
ROBINS AFB (KWRB)

\* When ALS inop, increase RVR to 40, vis to ¾ mile.  
 \*\* When ALS inop, increase RVR to 55, vis to 1 mile.  
 \*\*\* Circling not authorized SW of Rwy 15-33.



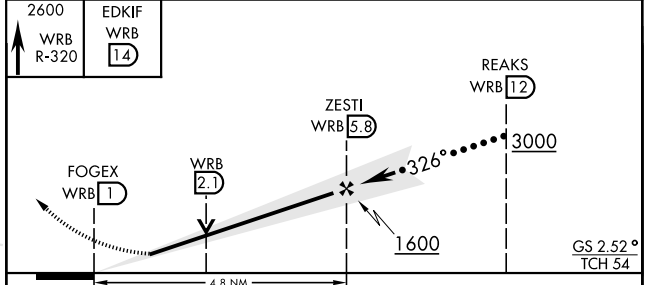
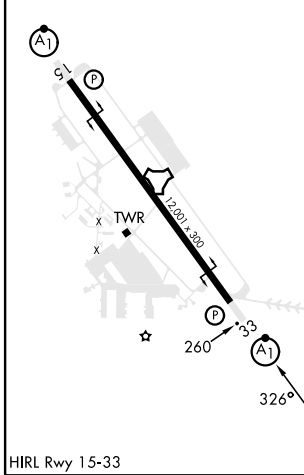
MISSED APPROACH: Climb To 2600 on WRB TACAN R-320 to EDKIF and hold.

ATIS <b>119.475 273.475</b>	ATLANTA APP CON <b>124.2 279.6</b>	TOWER <b>133.225 257.975</b>	GND CON <b>121.85 275.8</b>
--------------------------------	---------------------------------------	---------------------------------	--------------------------------



EMERG SAFE ALT 100 NM 3700

ELEV	294	TDZE	275
------	-----	------	-----



CATEGORY	C	D	E
S-ILS 33*	475/24	200	(200-½)
S-LOC 33**	640/35	365	(400-¾)
*** CIRCLING	880-1½	960-2	1040-2¾
	586 (600-1½)	666 (700-2)	746 (800-2¾)

# HI-ILS or LOC Z RWY 33

SE-4, 11 JUN 2026 to 09 JUL 2026

SE-4, 11 JUN 2026 to 09 JUL 2026