


HI-TACAN Z RWY 33

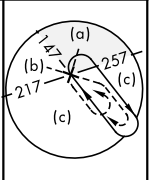
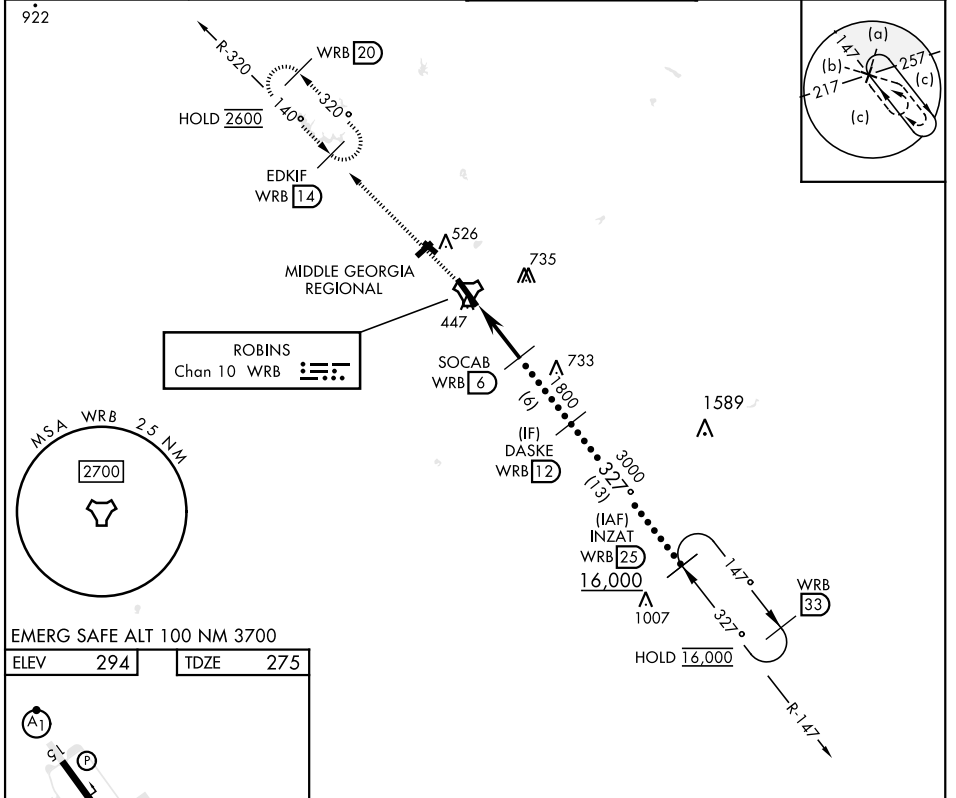
TACAN WRB Chan 10	APCH CRS 327°	Rwy ldg 12,001 TDZE 275 Arprt Elev 294	[USAF]	ROBINS AFB (KWRB)
-----------------------------	-------------------------	---	--------	-------------------

* When ALS inop, increase CAT CDE vis to 1 3/8 miles.
 ** Circling NA SW of Rwy 15-33.

ALSF-1 

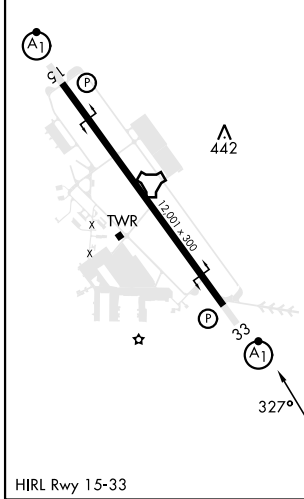
MISSED APPROACH: Climb To 2600 on WRB TACAN R-320 to EDKIF and hold.

ATIS 119.475 273.475	ATLANTA APP CON 124.2 279.6	TOWER 133.225 257.975	GND CON 121.85 275.8
--------------------------------	---------------------------------------	---------------------------------	--------------------------------



EMERG SAFE ALT 100 NM 3700

ELEV	294	TDZE	275
------	-----	------	-----



2600	EDKIF WRB 14	INZAT WRB 25	
WRB R-320			
TACAN	SOCAB WRB 6	DASKE WRB 12	
CAPMI WRB 1	WRB 2.3		
1800	3000	16,000	
2.77°	327°		
TCH 55			
5 NM			
CATEGORY	C	D	E
S-33*	720/45	445	(500- 7/8)
CIRCLING**	880-1 1/2	960-2	1040-2 3/4
	586 (600-1 1/2)	666 (700-2)	746 (800-2 3/4)

HI-TACAN Z RWY 33

SE-4, 11 JUN 2026 to 09 JUL 2026

SE-4, 11 JUN 2026 to 09 JUL 2026