

WARNER ROBINS, GEORGIA

# RNAV (GPS) RWY 33

|          |            |        |
|----------|------------|--------|
| APCH CRS | Rwy Idg    | 12,001 |
| 326°     | TDZE       | 275    |
|          | Arprt Elev | 294    |

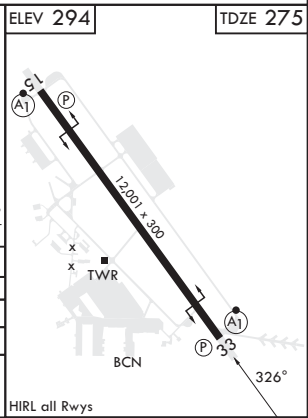
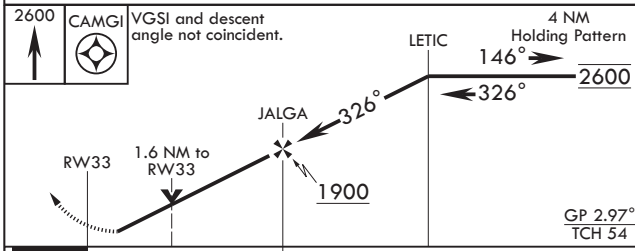
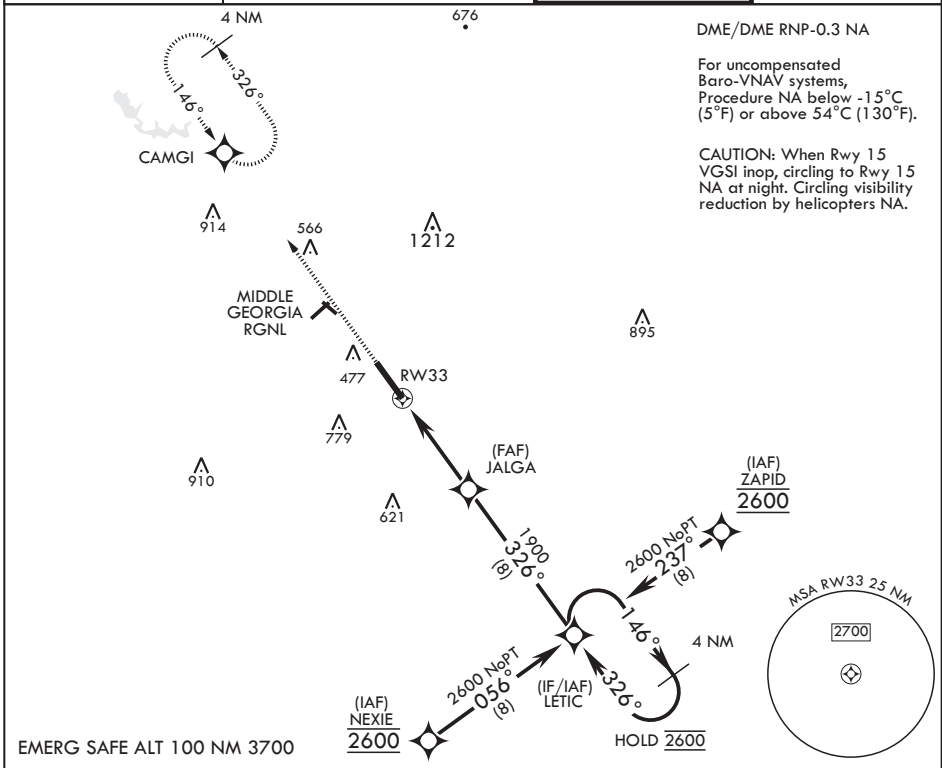
- (USAF)


ROBINS AFB (KWRB)

\* When ALS inop increase CAT ABCDE vis to 1 7/8 miles.  
 \*\* When ALS inop, increase CAT AB RVR to 55, vis to 1 mile, CAT CDE vis to 1 3/8.  
 \*\*\* Circling NA SW of RWY 33-15.

ALS-1  MISSED APPROACH: Climb to 2600 direct CAMGI and hold.

|                         |  |                          |                         |
|-------------------------|--|--------------------------|-------------------------|
| ATIS<br>119.475 273.475 | ATLANTA APP CON/DEP CON<br>124.2 279.6 | TOWER<br>133.225 257.975 | GND CON<br>121.85 275.8 |
|-------------------------|--|--------------------------|-------------------------|



| CATEGORY  | A                                 | B  | C  | D                                    | E   |
|---|-----------------------------------|--|--|--------------------------------------|---|
| LNAV/VNAV DA*   | 820-1 <sup>3</sup> / <sub>8</sub> |  | 545  | (600-1 <sup>3</sup> / <sub>8</sub> ) |   |
| LNAV MDA**  | 760/24                            | 485 (500- <sup>1</sup> / <sub>2</sub> )  | 760/50   | 485                                  | (500-1)   |
|  CIRCLING*** | 820-1 <sup>3</sup> / <sub>8</sub> | 486 (600-1 <sup>3</sup> / <sub>8</sub> ) | 840-1 <sup>1</sup> / <sub>2</sub><br>546<br>(600-1 <sup>1</sup> / <sub>2</sub> ) | 960-2<br>666 (700-2)                 | 1100-2 <sup>3</sup> / <sub>4</sub><br>806<br>(900-2 <sup>3</sup> / <sub>4</sub> ) |

WARNER ROBINS, GEORGIA

32°38'N - 83°36'W

ROBINS AFB (KWRB)

Amdt 5 20MAY21

# RNAV (GPS) RWY 33

SE-4, 11 JUN 2026 to 09 JUL 2026

SE-4, 11 JUN 2026 to 09 JUL 2026