

TACAN Y RWY 15

TACAN Chan 10	WRB	APCH CRS 143°	Rwy Ldg 12,001 TDZE 294 Arprt Elev 294
-------------------------	-----	-------------------------	---

[USAF]

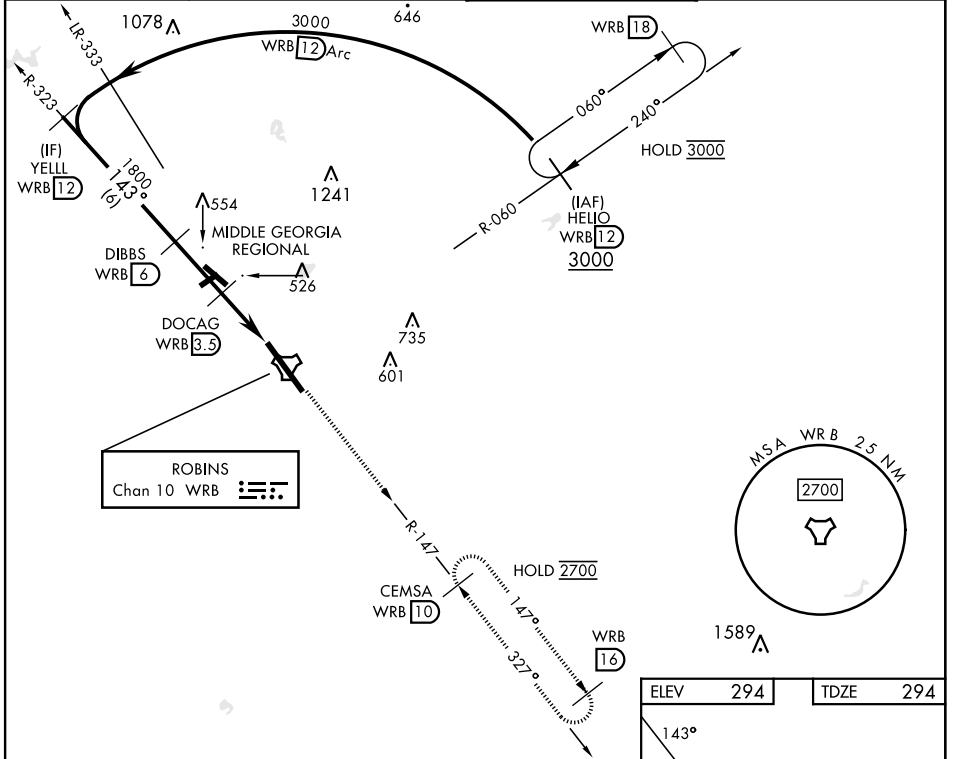
ROBINS AFB (KWRB)

*When ALS inop, increase CAT AB RVR to 55, vis to 1 mile; CAT CDE vis to 1 1/2 miles.
 **Circling not authorized SW of Rwy 15-33.

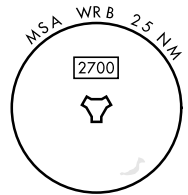


MISSED APPROACH: Climb To 2700 on WRB TACAN R-147 to CEMSA and hold.

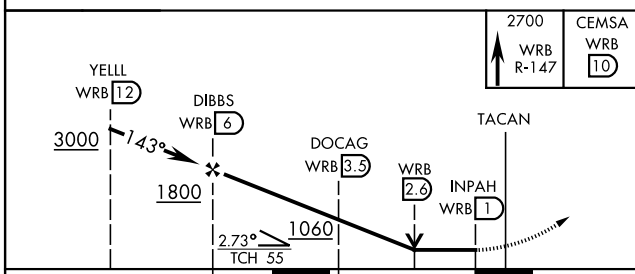
ATIS 119.475 273.475	ATLANTA APP CON 124.2 279.6	TOWER 133.225 257.975	GND CON 121.85 275.8
--------------------------------	---------------------------------------	---------------------------------	--------------------------------



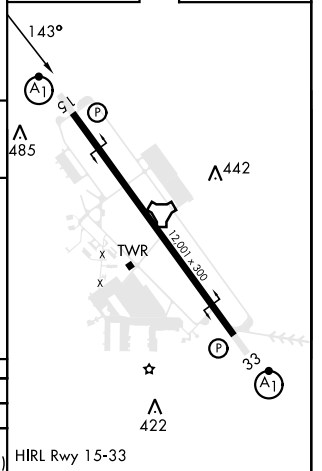
ROBINS
Chan 10 WRB



EMERG SAFE ALT 100 NM 3700



ELEV 294	TDZE 294
----------	----------



CATEGORY	A	B	C	D	E
S-15*	820/24	526 (600-1/2)	820/55	526 (600-1)	
CIRCLING**	820-1	526 (600-1)	880-1 1/2 586 (600-1 1/2)	960-2 666 (700-2)	1040-2 3/4 746 (800-2 3/4)

HIRL Rwy 15-33

TACAN Y RWY 15

SE-4, 11 JUN 2026 to 09 JUL 2026

SE-4, 11 JUN 2026 to 09 JUL 2026