


(STOOP.STOOP3) 26078  
STOOP THREE ARRIVAL

AL-449 (FAA)

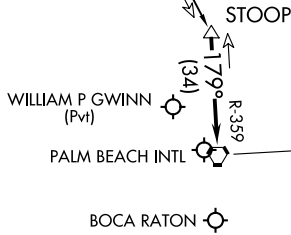
WEST PALM BEACH, FLORIDA

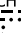
PALM BEACH APP CON  
124.6 317.4  
BCT D-ATIS  
121.125  
PBI D-ATIS  
123.75

MELBOURNE  
115.85 MLB   
Chan 105 (Y)

\*16000  
16000  
R-159  
(58)

NOTE: Jet aircraft only.  
NOTE: DME required.  
NOTE: RADAR required.



PALM BEACH  
115.7 PBI   
Chan 104

6000

Ldg KPBI/KBCT/06FA

NOTE: Chart not to scale.

ARRIVAL ROUTE DESCRIPTION

MELBOURNE TRANSITION (MLB.STOOP3): From over MLB VOR/DME on MLB R-159 to STOOP.

LANDING ALL AIRPORTS: From STOOP on PALM BEACH VORTAC (PBI) R-359 to cross PBI VORTAC at 6000. Expect RADAR vectors.

STOOP THREE ARRIVAL  
(STOOP.STOOP3) 19MAY22

WEST PALM BEACH, FLORIDA

SE-3, 11 JUN 2026 to 09 JUL 2026

SE-3, 11 JUN 2026 to 09 JUL 2026