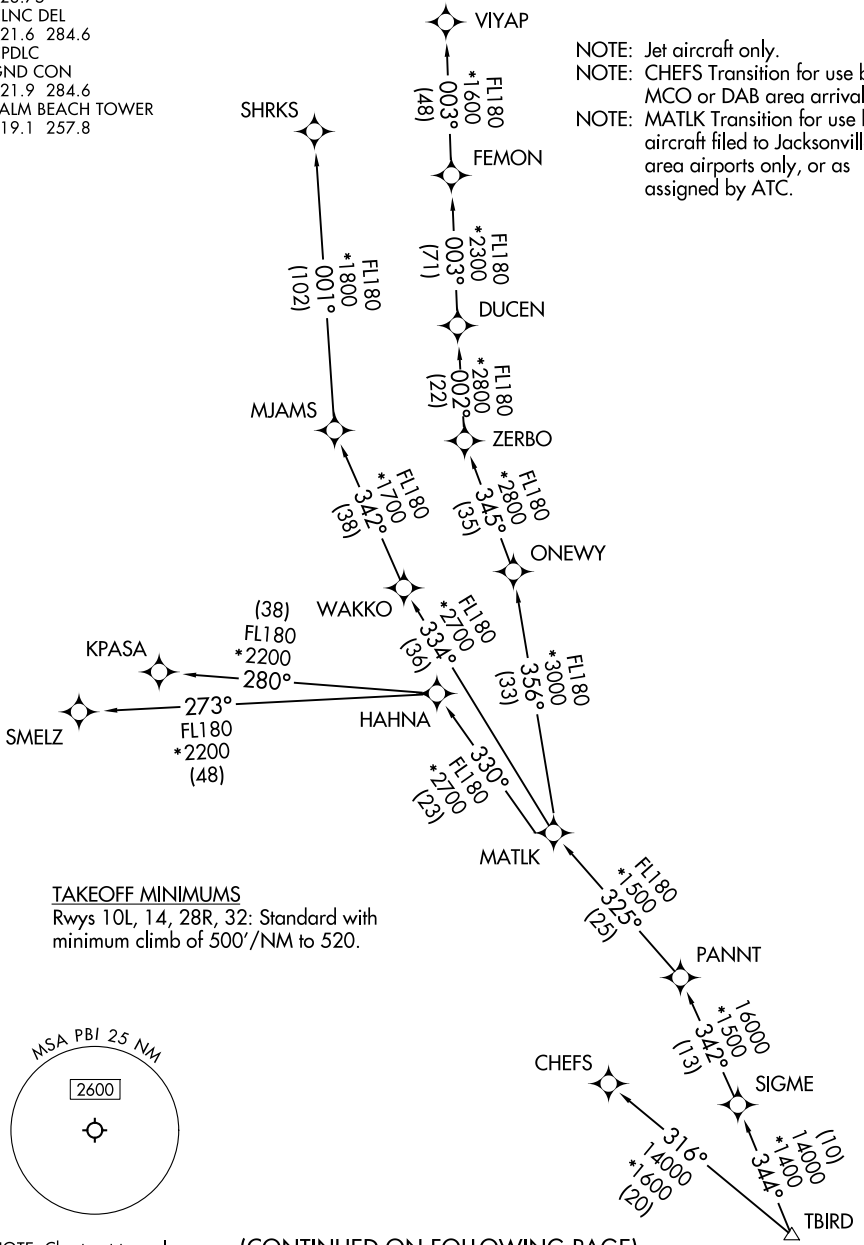


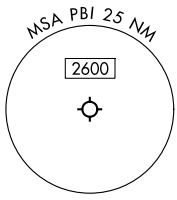
# TBIRD SEVEN DEPARTURE (RNAV) Transition Routes

PALM BEACH DEP CON 128.3 317.4 D-ATIS 123.75 CLNC DEL 121.6 284.6 CPDLC GND CON 121.9 284.6 PALM BEACH TOWER 119.1 257.8	RNAV 1 - DME/DME/IRU or GPS.	<b>TOP ALTITUDE: 11000</b>
	RADAR required.	

NOTE: Jet aircraft only.  
 NOTE: CHEFS Transition for use by MCO or DAB area arrivals.  
 NOTE: MATLK Transition for use by aircraft filed to Jacksonville area airports only, or as assigned by ATC.



**TAKEOFF MINIMUMS**  
 Rwy's 10L, 14, 28R, 32: Standard with minimum climb of 500'/NM to 520.



NOTE: Chart not to scale.

(CONTINUED ON FOLLOWING PAGE)

SE-3, 11 JUN 2026 to 09 JUL 2026

SE-3, 11 JUN 2026 to 09 JUL 2026