

# TTYLR FOUR ARRIVAL

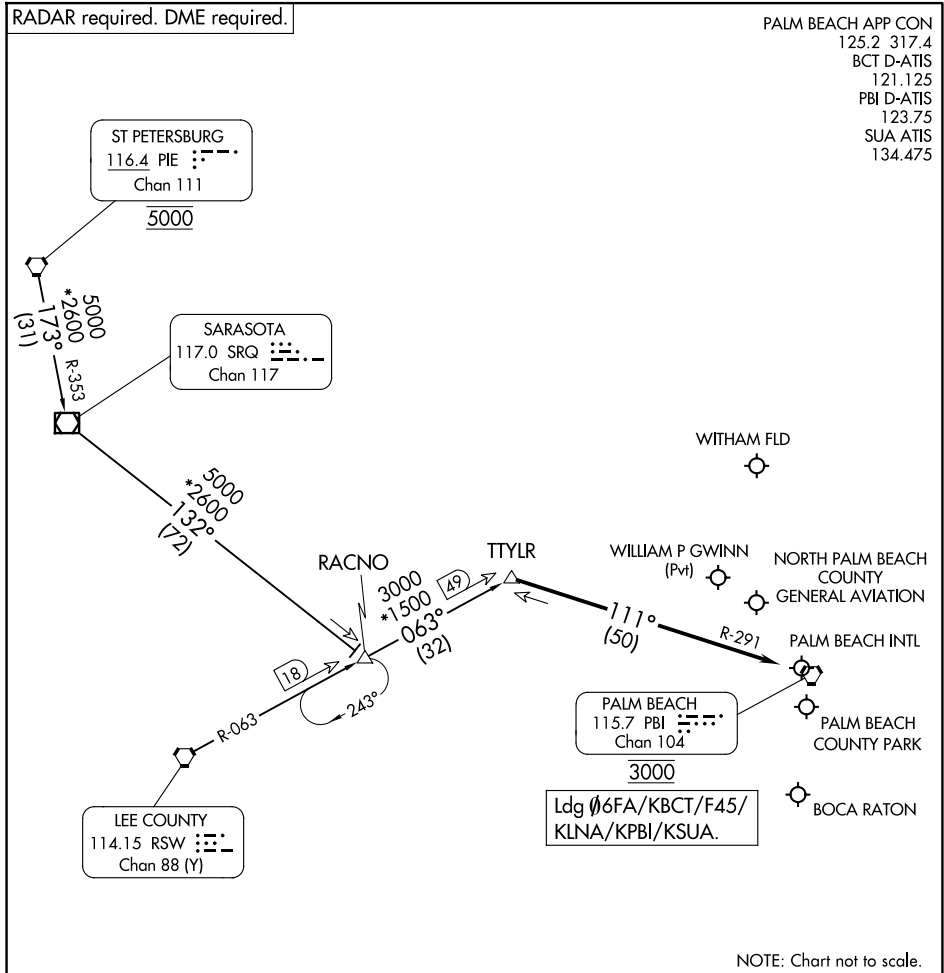
WEST PALM BEACH, FLORIDA

RADAR required. DME required.

PALM BEACH APP CON  
 125.2 317.4  
 BCT D-ATIS  
 121.125  
 PBI D-ATIS  
 123.75  
 SUA ATIS  
 134.475

SE-3, 11 JUN 2026 to 09 JUL 2026

SE-3, 11 JUN 2026 to 09 JUL 2026



NOTE: Chart not to scale.

## ARRIVAL ROUTE DESCRIPTION

**RACNO TRANSITION (RACNO.TTYLR4):** From over RACNO on RSW R-063 to TTYLR, thence. . . .

**ST PETERSBURG TRANSITION (PIE.TTYLR4):** From over PIE VORTAC on PIE R-173 and SRQ R-353 to SRQ VOR/DME, then on SRQ R-132 to RACNO, then on RSW R-063 to TTYLR, thence. . . .

**LANDING ALL AIRPORTS:** From TTYLR on PALM BEACH (PBI) R-291 to cross PBI VORTAC at 3000. Expect RADAR vectors.