

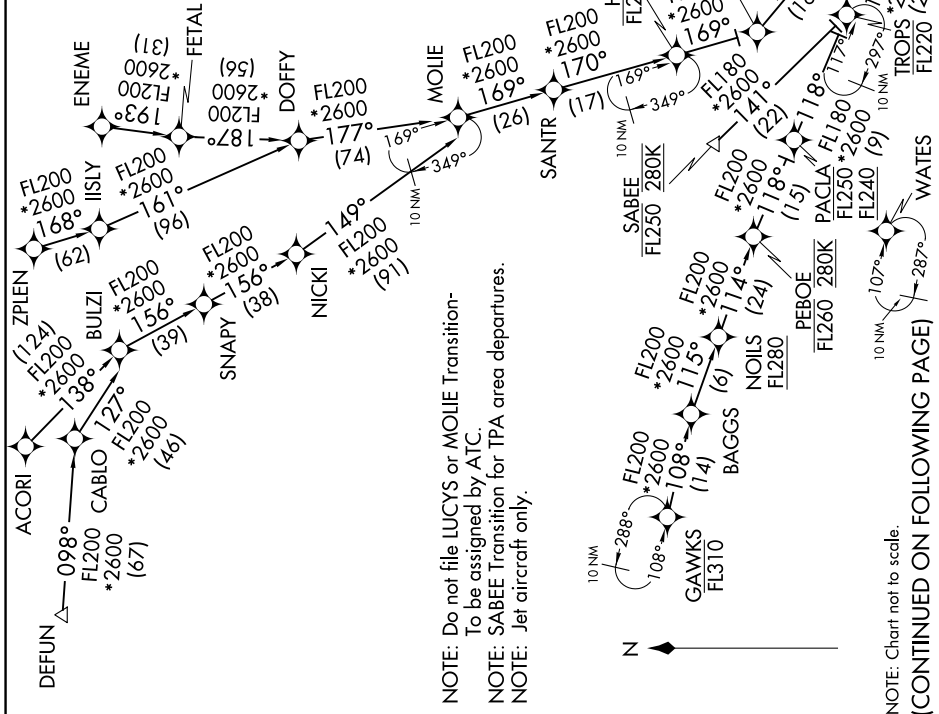
VUUDU ONE ARRIVAL (RNAV) Transition Routes

WEST PALM BEACH, FLORIDA

SE-3, 11 JUN 2026 to 09 JUL 2026

| | |
|--|--|
| RNAV 1 - DME/DME/IRU or GPS. GAWKS Transition: GPS. | PAUM BEACH APP CON 127.35 317.4 BCT D-ATIS 121.125 PBI D-ATIS 123.75 SUA ATIS 134.475 |
| RADAR required. | |

ACORI TRANSITION (ACORI.VUUDU1)
 DEFUN TRANSITION (DEFUN.VUUDU1)
 ENEME TRANSITION (ENEME.VUUDU1)
 GAWKS TRANSITION (GAWKS.VUUDU1)
 LUCYS TRANSITION (LUCYS.VUUDU1)
 MOJIE TRANSITION (MOJIE.VUUDU1)
 SABEE TRANSITION (SABEE.VUUDU1)
 SWAGS TRANSITION (SWAGS.VUUDU1)
 ZPLEN TRANSITION (ZPLEN.VUUDU1)



NOTE: Do not file LUCYS or MOJIE Transition-
 To be assigned by ATC.
 NOTE: SABEE Transition for TPA area departures.
 NOTE: Jet aircraft only.

NOTE: Chart not to scale.

SE-3, 11 JUN 2026 to 09 JUL 2026

VUUDU ONE ARRIVAL (RNAV) Transition Routes

WEST PALM BEACH, FLORIDA