

WICHITA, KANSAS

ILS or LOC RWY 1L

LOC I-AB 111.1	APCH CRS 008°	Rwy Idg 12,000
		TDZE 1347
		Arprt Elev 1372

(USAF)

MC CONNELL AFB (KIAB)

RADAR or DME required	ALSF-1	MISSED APPROACH: Climb to 2000 then climbing right turn to 4000, intercept IAB TACAN R-011 to 15 DME (PURKE) and hold. Expect further clearance from ATC.
<p>▼ * When ALS inop, increase RVR to 40 and vis to 3/4 mile.</p> <p>** When ALS inop, increase RVR to 55 and vis to 1 mile.</p> <p>*** Circling not authorized W of Rwy 1L-19R.</p>		

D-ATIS 124.65 269.9	WICHITA APP CON 134.8 269.1	TOWER 127.25 291.775	GND CON 118.0 275.8
-------------------------------	---------------------------------------	--------------------------------	-------------------------------

When Circling to Rwy 19L at night, operational VGSI required, remain on or above VGSI glidepath until threshold.

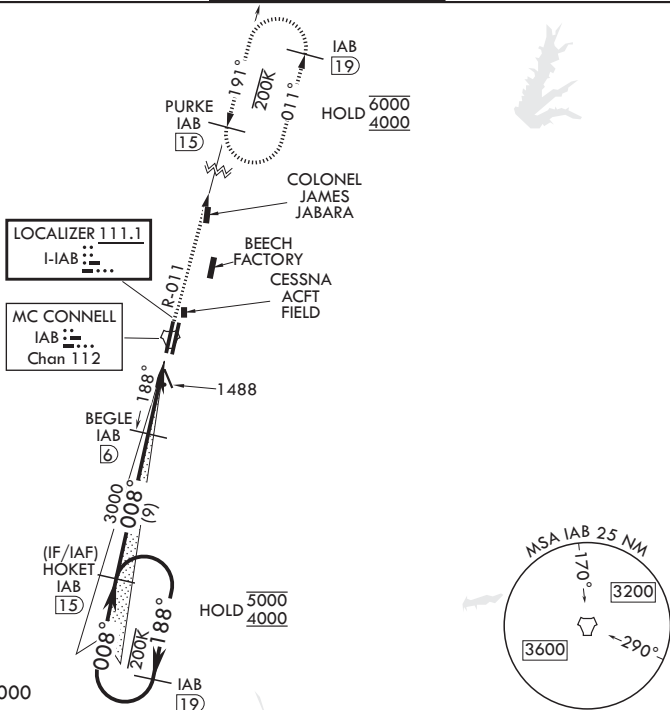
CAUTION: VGSI and ILS TCH are not coincidental.

Practice circling approaches NE of IAB not authorized.

Rwy 1L glideslope unusable for coupled approaches at or below 1533 MSL.

CAUTION: LOC front course unusable beyond 25° left/right of course.

RADAR required for holding above 4000



EMERG SAFE ALT 100 NM 4000

<p>HOKET IAB 15</p> <p>5000 ← 188°</p> <p>4000 008° →</p> <p>GS 3.00°</p> <p>TCH 56</p>		<p>2000</p> <p>4000</p> <p>PURKE IAB 15</p>	ELEV 1372	TDZE 1347	
<p>BEGLE IAB 6</p> <p>3000</p> <p>JIMIT I.4</p> <p>4.6 NM</p> <p>0.5</p>					
CATEGORY	A	B	C	D	E
S-ILS 1L*	1547/24		200	(200-½)	
S-LOC 1L**	1740/24	393 (400-½)	1740/35	393	(400-¾)
CIRCLING***	1900-1	528 (600-1)	1940-1½ 568 (600-½)	1940-2 568 (600-2)	2400-3 1028 (1100-3)
<p>WICHITA, KANSAS</p> <p>Amdt 8 12JUN25</p> <p>37°37'N - 97°16'W</p> <p>MC CONNELL AFB (KIAB)</p>					

ILS or LOC RWY 1L

NC-2, 11 JUN 2026 to 09 JUL 2026

NC-2, 11 JUN 2026 to 09 JUL 2026