

WICHITA, KANSAS

# RNAV (GPS) RWY 19L

APCH CRS <b>191°</b>	Rwy Idg TDZE Arprt Elev	<b>12,007</b> <b>1365</b> <b>1372</b>
-------------------------	-------------------------------	---

(USAF)

MC CONNELL AFB (KIAB)

RNP APCH-GPS	ALSF-1 	MISSED APPROACH: Climb to 2000 then climbing to 4000 direct HEKLO and hold. Expect further clearance from ATC.
<p><b>▼</b> * When ALS inop, increase CAT AB RVR to 55, vis to 1 mile; CAT CDE RVR to 60, vis to 1 1/8 miles. ** Circling not authorized W of Rwy 1L-19R.</p>		

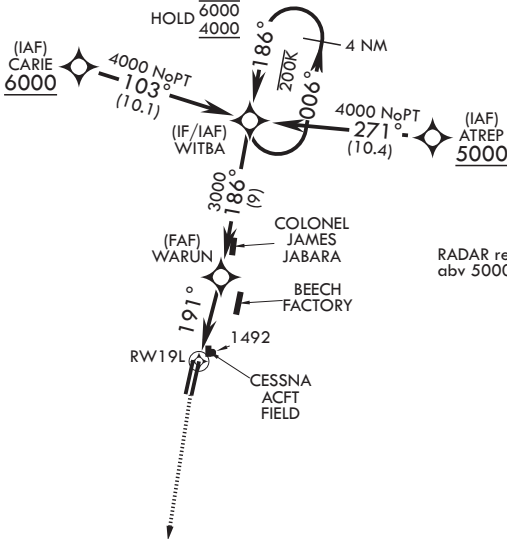
D-ATIS <b>124.65 269.9</b>	WICHITA APP CON <b>134.8 269.1</b>	TOWER <b>127.25 291.775</b>	GND CON <b>118.0 275.8</b>
-------------------------------	---------------------------------------	--------------------------------	-------------------------------

Terrain 1368 ft MSL  
200 ft from threshold,  
200 ft right of course.

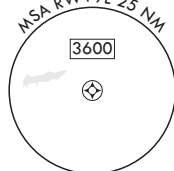
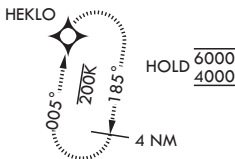
Rwy 19L helicopter  
visibility reduction below  
RVR 50 not authorized.

USAF ONLY: When VGSI  
Inop, Straight-In Rwy 19L  
authorized at night with  
aircrew command approval.

Straight-in Rwy 19L at night,  
operational VGSI required,  
remain on or above VGSI  
glidepath until threshold.



RADAR required for holding  
abv 5000 or abv 230 KIAS



EMERG SAFE ALT 100 NM 4000

			ELEV 1372	TDZE 1365	
CATEGORY	A	B	C	D	E
RNAV MDA*	1760/50		395	(400-1)	
CIRCLING**	1900-1	528 (600-1)	1900-1½ 528 (600-1½)	1940-2 568 (600-2)	2400-3 1028 (1100-3)

WICHITA, KANSAS

37°37'N - 97°16'W

MC CONNELL AFB (KIAB)

Amdt 8 12JUN25

# RNAV (GPS) RWY 19L

NC-2, 11 JUN 2026 to 09 JUL 2026

NC-2, 11 JUN 2026 to 09 JUL 2026