

APCH CRS	Rwy Idg	12,007
005°	TDZE	1347
	Arprt Elev	1372

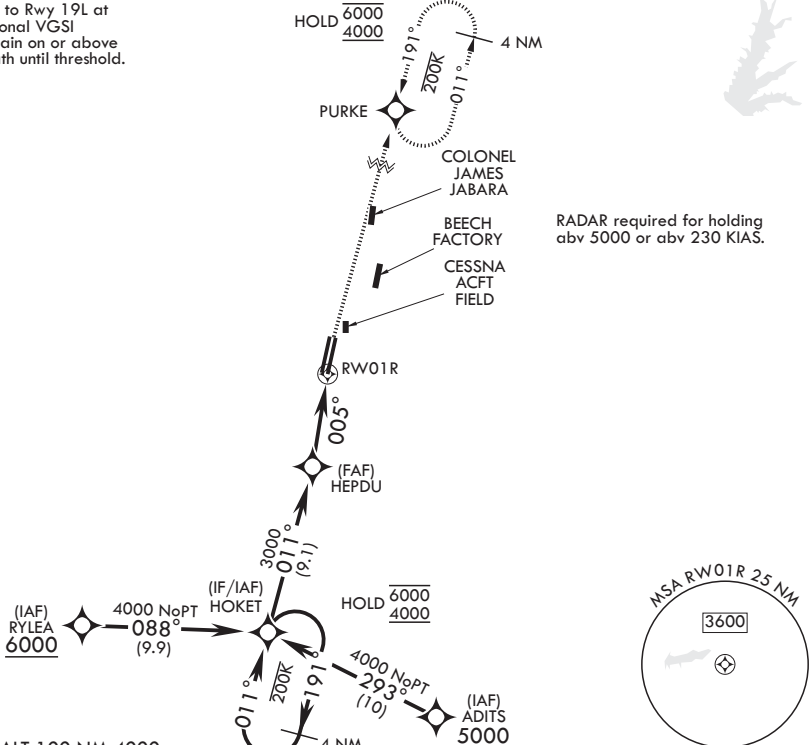
(USAF)

MC CONNELL AFB (KIAB)

RNP APCH-GPS	SSALR	MISSED APPROACH: Climb to 2000 then climbing to 4000, direct PURKE and hold. Expect further clearance from ATC.
<p>▼ * When ALS inop, increase CAT AB RVR to 55, vis to 1 mile; CAT CDE vis to 1 1/4 miles.</p> <p>** Circling not authorized west of Rwy 1L-19R.</p>		

D-ATIS <b>124.65 269.9</b>	WICHITA APP CON <b>134.8 269.1</b>	TOWER <b>127.25 291.775</b>	GND CON <b>118.0 275.8</b>
-------------------------------	---------------------------------------	--------------------------------	-------------------------------

When circling to Rwy 19L at night, operational VGSI required, remain on or above VGSI glidepath until threshold.



EMERG SAFE ALT 100 NM 4000

<p>4 NM Holding Pattern</p>	<p>2000</p>	<p>4000</p>	<p>PURKE</p>	ELEV 1372	TDZE 1347
<p>6000 ← 191°</p> <p>4000 → 011°</p> <p>HOKET</p> <p>HEPDU</p> <p>3000</p> <p>011°</p> <p>005°</p> <p>1.2 NM to RW01R</p> <p>RW01R</p> <p>3.02° TCH 64</p> <p>5 NM</p>	<p>TWR</p> <p>0.3% UP</p> <p>12,000 x 150</p> <p>12,007 x 150</p> <p>11L1R</p> <p>005°</p> <p>HIRL all rwys</p>				
CATEGORY	A	B	C	D	E
RNAV MDA*	1780/40		433	(500-¾)	
CIRCLING**	1900-1	528 (600-1)	1900-1½ 528 (600-1½)	1940-2 568 (600-2)	2400-3 1028 (1100-3)

NC-2, 11 JUN 2026 to 09 JUL 2026

NC-2, 11 JUN 2026 to 09 JUL 2026