

WICHITA, KANSAS

RNAV (RNP) Z RWY 19R

APCH CRS 188°	Rwy Idg TDZE Arprt Elev	12,000 1372 1372
-------------------------	-------------------------------	---

(USAF)

MC CONNELL AFB (KIAB)

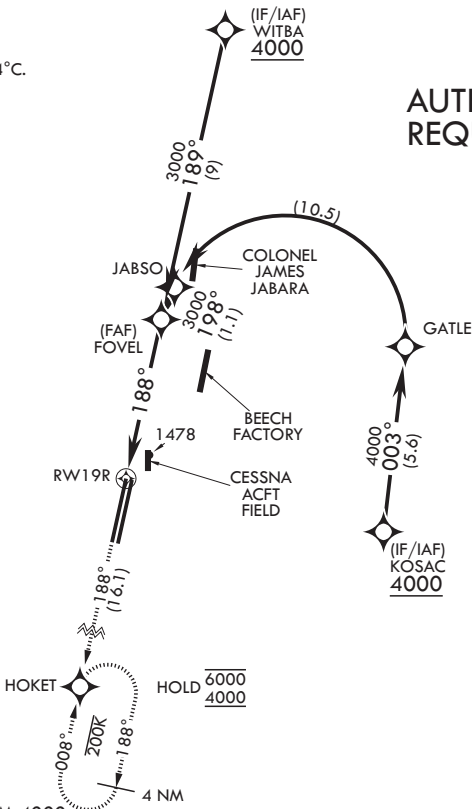
RNP AR APCH-GPS
 * When ALS inop, increase vis to 1 1/4 miles.
 ** When ALS inop, increase vis to 1 3/8 miles.

ALSF-1
 MISSED APPROACH: Climb to 4000 direct HOKET and hold as published. Expect further clearance from ATC.

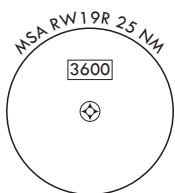
D-ATIS 124.65 269.9	WICHITA APP CON 134.8 269.1	TOWER 127.25 291.775	GND CON 118.0 275.8
-------------------------------	---------------------------------------	--------------------------------	-------------------------------

For uncompensated Baro-VNAV systems, procedure not authorized below -17°C. or above 54°C.

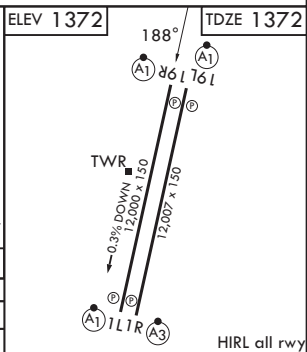
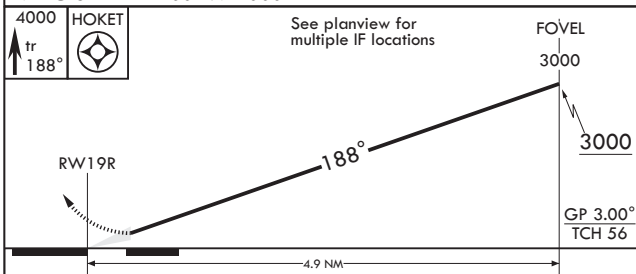
AUTHORIZATION REQUIRED



RADAR required for holding above 5000 or above 230 KIAS



EMERG SAFE ALT 100 NM 4000



CATEGORY	A	B	C	D
RNP 0.10 DA*	1798/40	426	(500-3/4)	
RNP 0.30 DA**	1844/50	472	(500-1)	

WICHITA, KANSAS
 Amdt 1 12JUN25

37°37'N - 97°16'W

MC CONNELL AFB (KIAB)

RNAV (RNP) Z RWY 19R

NC-2, 11 JUN 2026 to 09 JUL 2026

NC-2, 11 JUN 2026 to 09 JUL 2026

HIRL all rwy