

WICHITA, KANSAS

RNAV (GPS) Y RWY 19R

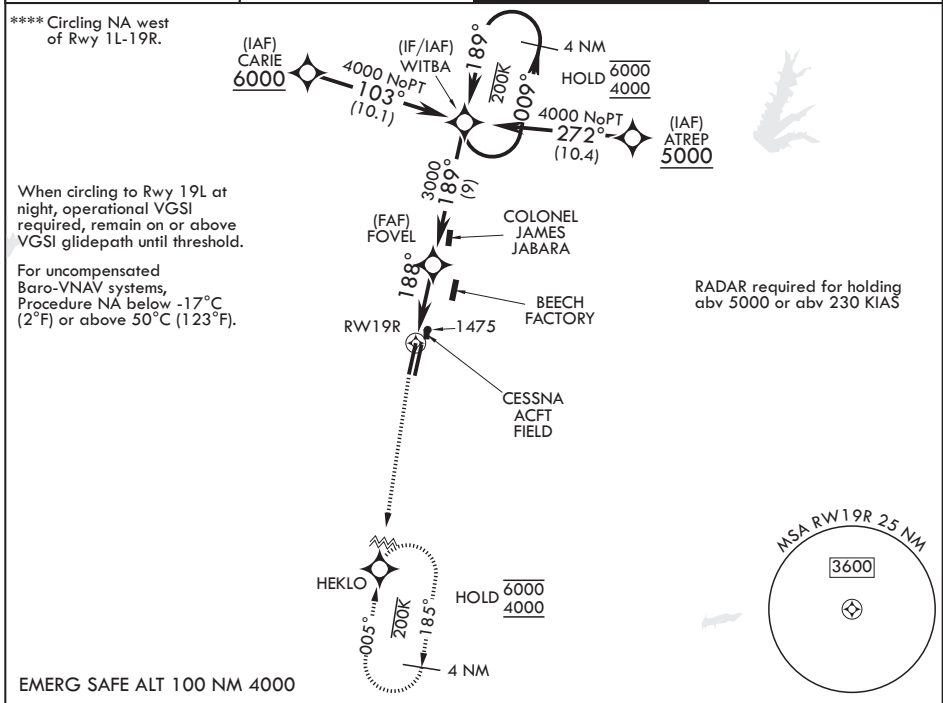
WAAS CH 71277 W19A	APCH CRS 188°	Rwy ldg 12000	TDZE 1372
		Arprt Elev 1372	

(USAF)

MC CONNELL AFB (KIAB)

RNP APCH-GPS	ALSF-1 	MISSED APPROACH: Climb to 2000 then climbing to 4000 direct HEKLO and hold. Expect further clearance from ATC.
<p>▼ * When ALS inop, increase RVR to 40, vis to 3/4 mile. ** When ALS inop increase RVR to 55, vis to 1 mile. *** When ALS inop increase CAT AB RVR to 55, vis to 1 mile. CAT CDE vis to 1 3/8 miles.</p>		

D-ATIS 124.65 269.9	WICHITA APP CON 134.8 269.1	TOWER 127.25 291.775	GND CON 118.0 275.8
------------------------	--------------------------------	-------------------------	------------------------



 	 WITBA Holding Pattern 4 NM 009° → 6000 ← 189° 4000	ELEV 1372	188°	TDZE 1372																														
 RWY 19R 1.2 NM to RWY 19R 188° 3000 GP 3.00° TCH 56	 TWR 0.3% DOWN 12,000 x 150 12,007 x 150	<table border="1"> <thead> <tr> <th>CATEGORY</th> <th>A</th> <th>B</th> <th>C</th> <th>D</th> <th>E</th> </tr> </thead> <tbody> <tr> <td>LPV DA*</td> <td colspan="2">1572/24</td> <td>200</td> <td colspan="2">(200-½)</td> </tr> <tr> <td>LNAV/VNAV DA**</td> <td colspan="2">1748/35</td> <td>376</td> <td colspan="2">(400-¾)</td> </tr> <tr> <td>LNAV MDA***</td> <td>1820/24 448 (500-½)</td> <td>1820/45</td> <td>448 (500-¾)</td> <td colspan="2"></td> </tr> <tr> <td>CIRCLING****</td> <td>1900-1 528 (600-1)</td> <td>1900-1½ 528 (600-1½)</td> <td>1940-2 568 (600-2)</td> <td colspan="2">2400-3 1028 (1100-3)</td> </tr> </tbody> </table>			CATEGORY	A	B	C	D	E	LPV DA*	1572/24		200	(200-½)		LNAV/VNAV DA**	1748/35		376	(400-¾)		LNAV MDA***	1820/24 448 (500-½)	1820/45	448 (500-¾)			CIRCLING****	1900-1 528 (600-1)	1900-1½ 528 (600-1½)	1940-2 568 (600-2)	2400-3 1028 (1100-3)	
CATEGORY	A	B	C	D	E																													
LPV DA*	1572/24		200	(200-½)																														
LNAV/VNAV DA**	1748/35		376	(400-¾)																														
LNAV MDA***	1820/24 448 (500-½)	1820/45	448 (500-¾)																															
CIRCLING****	1900-1 528 (600-1)	1900-1½ 528 (600-1½)	1940-2 568 (600-2)	2400-3 1028 (1100-3)																														
HIRL all rwys																																		

WICHITA, KANSAS
Amdt 7 12JUN25

37°37'N - 97°16'W

MC CONNELL AFB (KIAB)

RNAV (GPS) Y RWY 19R

NC-2, 11 JUN 2026 to 09 JUL 2026

NC-2, 11 JUN 2026 to 09 JUL 2026