

WICHITA, KANSAS

# TACAN RWY 1L

TACAN IAB Chan 112	APCH CRS 011°	Rwy ldg TDZE Arprt Elev	12,000 1347 1372
-----------------------	------------------	-------------------------------	------------------------

(USAF)

MC CONNELL AFB (KIAB)

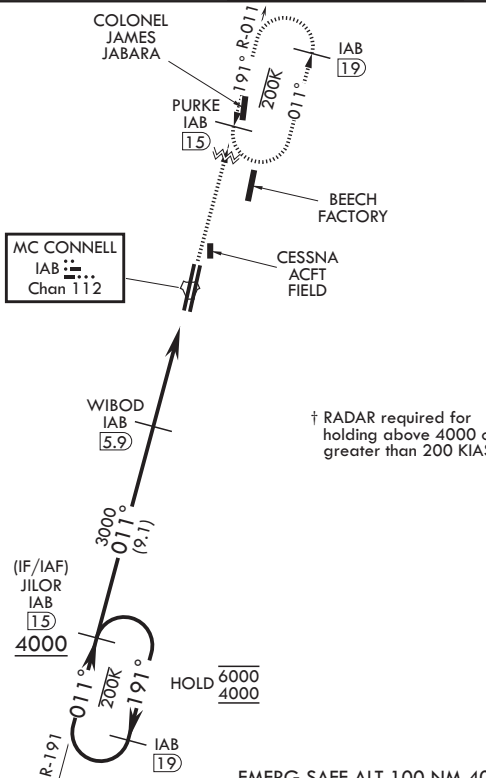
▼ \*When ALS inop, increase CAT AB RVR to 55 and vis to 1 mile, CAT CDE vis to 1 1/4 miles.  
\*\*Circling not authorized W of Rwy 1L-19R.



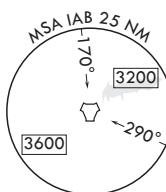
MISSED APPROACH: Climb to 4000 via IAB TACAN R-011 to 15 DME (PURKE) and hold as published. Expect further clearance from ATC.

D-ATIS 124.65 269.9	WICHITA APP CON 134.8 269.1	TOWER 127.25 291.775	GND CON 118.0 275.8
------------------------	--------------------------------	-------------------------	------------------------

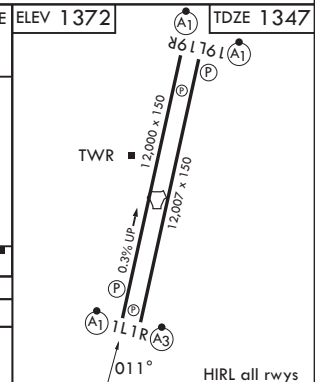
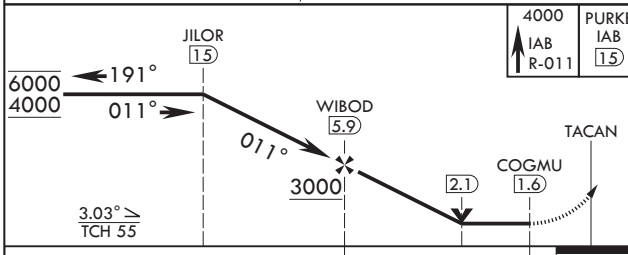
Practice circling approaches NE of IAB not authorized.



† RADAR required for holding above 4000 or greater than 200 KIAS.



EMERG SAFE ALT 100 NM 4000



CATEGORY	A	B	C	D	E
S-1L*	1780/24 433 (500-½)		1780/40 433 (500-¾)		
☐ CIRCLING**	1900-1 528 (600-1)		1940-1½ 568 (600-1½)	1940-2 568 (600-2)	2400-3 1028 (1100-3)

WICHITA, KANSAS  
Amdt 6 28DEC23

37°37'N - 97°16'W

MC CONNELL AFB (KIAB)  
**TACAN RWY 1L**

NC-2, 11 JUN 2026 to 09 JUL 2026

NC-2, 11 JUN 2026 to 09 JUL 2026