

WICHITA FALLS, TEXAS

HI-TACAN RWY 33L

TACAN SHP Chan 45	APCH CRS 334°	Rwy ldg 13,100 TDZE 1000 Arprt Elev 1019
-------------------	---------------	--

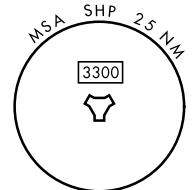
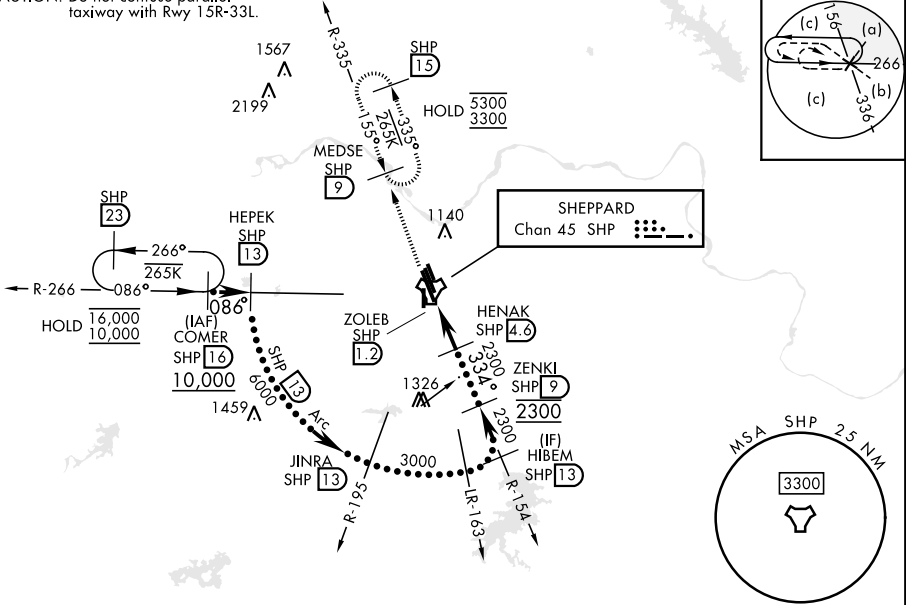
[USAF]

SHEPPARD AFB/WICHITA FALLS MUNI (KSPS)

▼ * When ALS inop, increase CAT CDE vis to 1½ miles. ** Circling not authorized W of Rwy 15R-33L.		MALS R 	MISSED APPROACH: Climb and maintain 3300, intercept SHP TACAN R-335 to SHP R-335/9 DME (MEDSE) and hold.
--	--	------------	--

ATIS* 132.05 269.9	APP CON 118.2 269.025	TOWER* 119.75 0 279.525 (CTAF)	GND CON 125.5 289.4	CLNC DEL 121.2 282.225	ASR
-----------------------	--------------------------	-----------------------------------	------------------------	---------------------------	-----

CAUTION: Do not confuse parallel taxiway with Rwy 15R-33L.

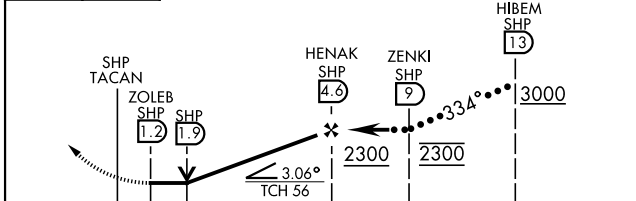


SC-2, 11 JUN 2026 to 09 JUL 2026

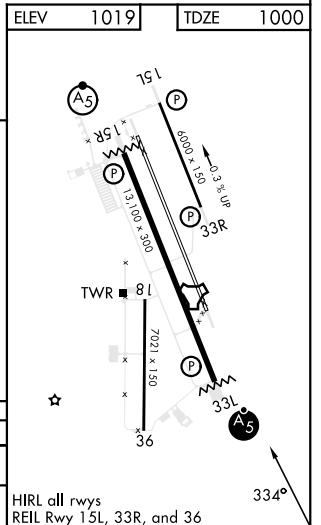
SC-2, 11 JUN 2026 to 09 JUL 2026

EMERG SAFE ALT 100 NM 4600

3300	MEDSE SHP 9	VGSI and descent angles not coincident.
------	-------------	---



CATEGORY	C	D	E
S-33L *	1420-¾	420	(500-¾)
CIRCLING **	1480-1½ 461 (500-1½)	2100-3	1081 (1100-3)



HIRL all rwys
REIL Rwy 15L, 33R, and 36

WICHITA FALLS, TEXAS

33°59'N-98°30'W

SHEPPARD AFB/WICHITA FALLS MUNI (KSPS)

Amdt 6 23JAN25

HI-TACAN RWY 33L