

WICHITA FALLS, TEXAS

# ILS or LOC Y RWY 33L

LOC/DME I-SPS <b>109.7</b> Chan <b>34</b>	APCH CRS <b>333°</b>	Rwy Idg <b>13,100</b> TDZE <b>1000</b> Arprt Elev <b>1019</b>
---	-------------------------	---

[USAF]

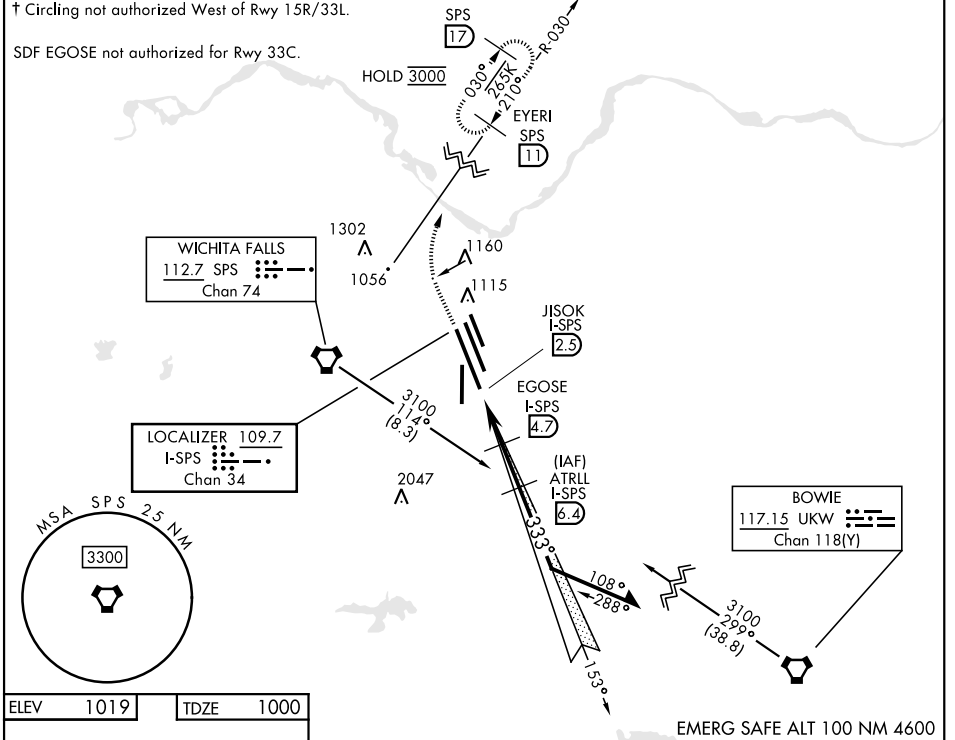
SHEPPARD AFB/WICHITA FALLS MUNI (KSPS)

<p>▼ * When ALS inop, increase vis to ¾ mile. ** When ALS inop, increase vis to 1 mile. *** When ALS inop, increase CAT AB vis to 1 mile; CAT CDE vis to 1½ miles.</p>	<p>MALSR <b>A5</b></p>	<p>MISSED APPROACH: Climb to 2200, then climbing right turn to 3000 via SPS VORTAC R-030 to EYERI (SPS R-030/11) and hold.</p>
--	----------------------------	--

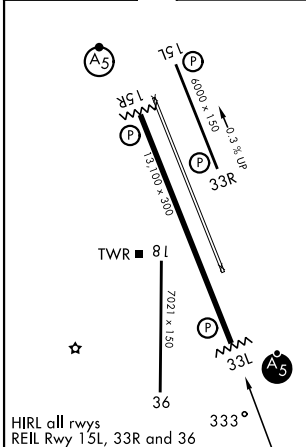
ATIS ★ <b>132.05 269.9</b>	APP CON <b>118.2 269.025</b>	TOWER ★ <b>119.75 0 279.525</b> (CTAF)	GND CON <b>125.5 289.4</b>	ASR
-------------------------------	---------------------------------	---	-------------------------------	-----

† Circling not authorized West of Rwy 15R/33L.

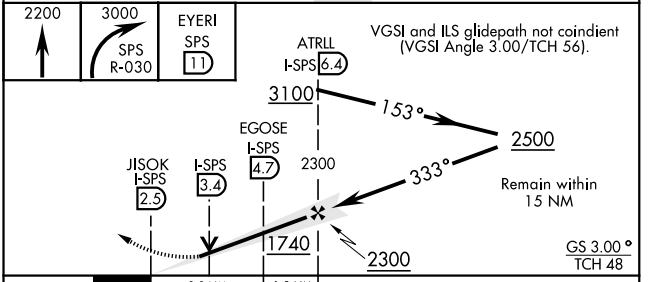
SDF EGOSE not authorized for Rwy 33C.



ELEV 1019	TDZE 1000
-----------	-----------



HIRL all rwys  
REIL Rwy 15L, 33R and 36



CATEGORY	A	B	C	D	E
S-ILS 33L *		1200-½	200 (200-½)		
S-LOC 33L **		1340-½	340 (400-½)		
CIRCLING †	1440-1 421 (500-1)	1480-1 461 (500-1)	1480-1½ 461 (500-1½)	2100-3	1081 (1100-3)

WICHITA FALLS, TEXAS

33° 59' N-98° 30' W

SHEPPARD AFB/WICHITA FALLS MUNI (KSPS)

Amtd 8 25DEC25

# ILS or LOC Y RWY 33L

SC-2, 11 JUN 2026 to 09 JUL 2026

SC-2, 11 JUN 2026 to 09 JUL 2026