

WICHITA FALLS, TEXAS

# RNAV (GPS) RWY 15R

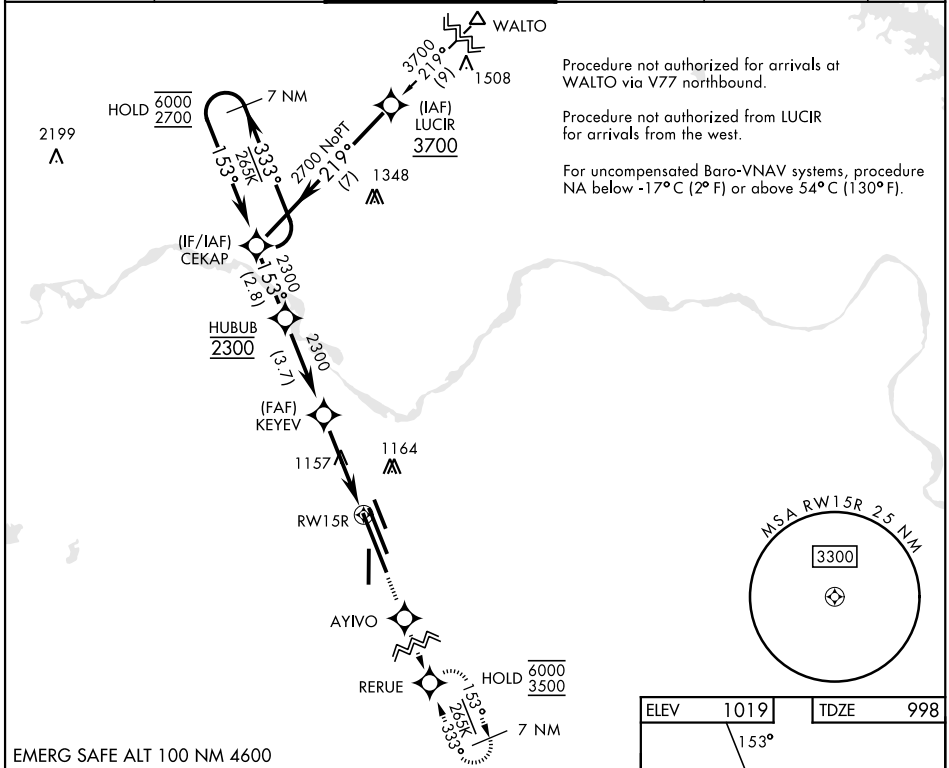
APCH CRS	Rwy Idg <b>13,100</b>
<b>153°</b>	TDZE <b>998</b>
	Arprt Elev <b>1019</b>

[USAF]

SHEPPARD AFB/WICHITA FALLS MUNI (KSPS)

RNP APCH - GPS	MALSRS 	MISSED APPROACH: Climb to 3500 direct AYIVO and via 153° track to RERUE and hold.
<p>▼ * When ALS inop, increase CAT AB vis to 3/8 mile; CAT CDE vis to 7/8 mile.          ** When ALS inop, increase CAT AB vis to 1 mile; CAT CDE vis to 1 1/4 miles.          *** Circling not authorized West of Rwy 15R-33L.</p>		

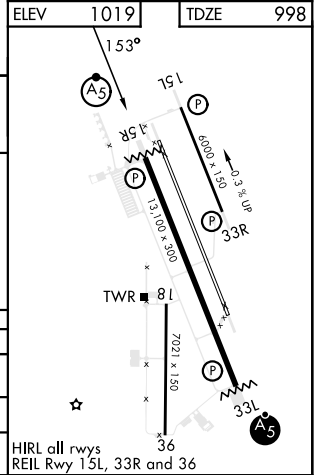
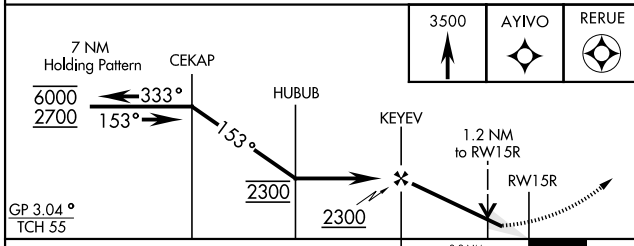
ATIS ★	APP CON	TOWER ★	GND CON	CLNC DEL	ASR
<b>132.05 269.9</b>	<b>118.2 269.025</b>	<b>119.75 0 279.525 (CTAF)</b>	<b>125.5 289.4</b>	<b>121.2 282.225</b>	



SC-2, 11 JUN 2026 to 09 JUL 2026

SC-2, 11 JUN 2026 to 09 JUL 2026

EMERG SAFE ALT 100 NM 4600



CATEGORY	A	B	C	D	E
LNAV/VNAV DA*	1249-1/2 251 (300-1/2)	1252-1/2 254 (300-1/2)	1260-1/2 262 (300-1/2)	1271-1/2	273 (300-1/2)
LNAV MDA**	1420-1/2	422 (500-1/2)	1420-3/4	422	(500-3/4)
CIRCLING***	1420-1 401 (500-1)	1480-1 461 (500-1)	1480-1 1/2 461 (500-1 1/2)	2100-3	1081 (1100-3)

WICHITA FALLS, TEXAS      33°59'N-98°30'W      SHEPPARD AFB/WICHITA FALLS MUNI (KSPS)

Amdt 5 23JAN25

# RNAV (GPS) RWY 15R