

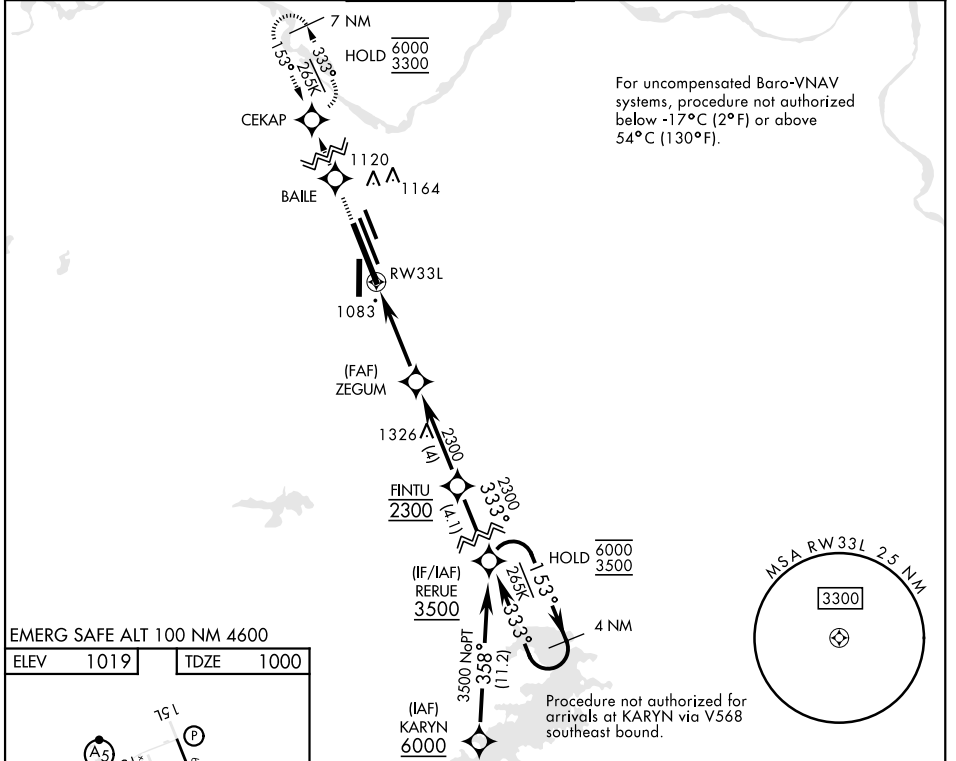
RNAV (GPS) RWY 33L

APCH CRS	Rwy ldg	13.100
333°	TDZE	1000
	Arprt Elev	1019

[USAF]

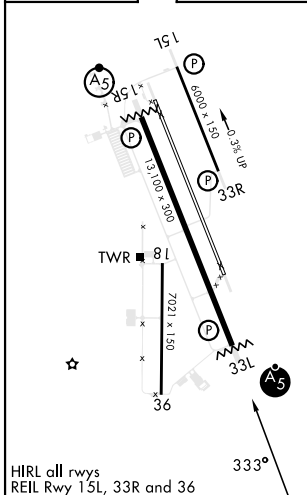
SHEPPARD AFB/WICHITA FALLS MUNI (KSPS)

RNP APCH - GPS		▼ * When ALS inop, increase vis to ¾ mile. ** When ALS inop, increase vis to 1 mile. *** Circling not authorized SW of Rwy 15R-33L.		MALSR 	MISSED APPROACH: Climb to 3300 direct BAILE, track 333° to CEKAP and hold.	
ATIS ★	APP CON	TOWER★		GND CON	CLNC DEL	ASR
132.05 269.9	118.2 269.025	119.750 279.525(CTAF)		125.5 289.4	121.2 282.225	

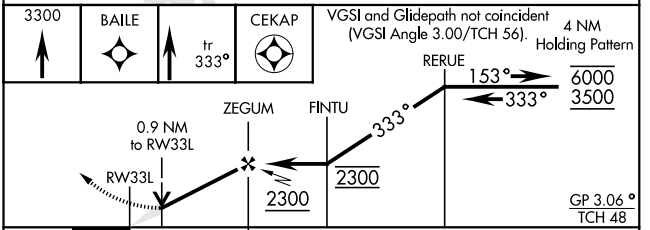


EMERG SAFE ALT 100 NM 4600

ELEV	1019	TDZE	1000
------	------	------	------



HIRL all rwys
REIL Rwy 15L, 33R and 36



CATEGORY	A	B	C	D	E
LNNAV/VNAV DA *	1255-½		255	(300-½)	
LNNAV MDA **	1340-½		340	(400-½)	
CIRCLING ***	1440-1 421 (500-1)	1480-1 461 (500-1)	1480-1½ 461 (500-1½)	2100-3 1081 (1100-3)	

RNAV (GPS) RWY 33L

SC-2, 11 JUN 2026 to 09 JUL 2026

SC-2, 11 JUN 2026 to 09 JUL 2026