

WAAS CH <b>90499</b> <b>W17A</b>	APP CRS <b>169°</b>	Rwy Ldg <b>6604</b> TDZE <b>32</b> Apt Elev <b>32</b>
--	------------------------	---

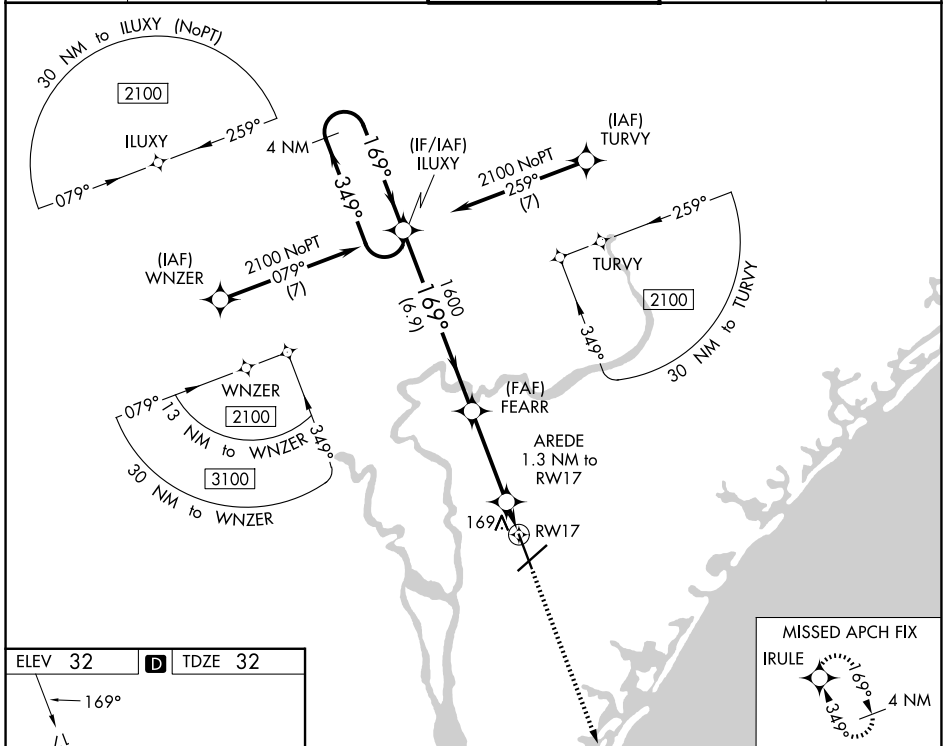
# RNAV (GPS) RWY 17

WILMINGTON INTL (ILM)

**⚠** For uncompensated Baro-VNAV systems, LNAV/VNAV NA below -7°C (20°F) or above 54°C (130°F). DME/DME RNP-0.3 NA. Rwy 17 helicopter visibility reduction below ¼ SM NA.

MISSED APPROACH: Climb to 1700 direct IRULE and hold.

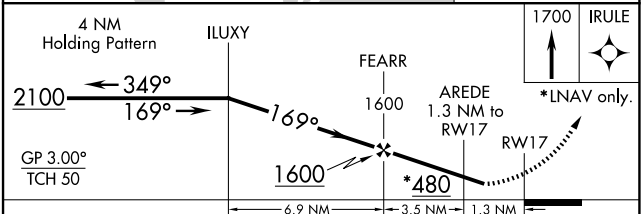
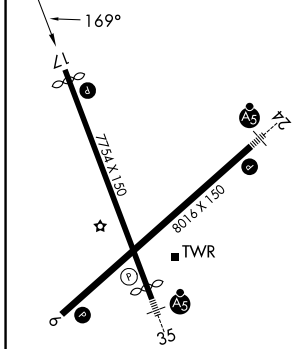
ATIS <b>124.975</b>	WILMINGTON APP CON★ <b>118.25 284.65</b> (164°-343°) <b>135.75 317.425</b> (344°-163°)	WILMINGTON TOWER★ <b>119.9</b> (CTAF) <b>0 239.3</b>	GND CON <b>121.9 348.6</b>	UNICOM <b>122.95</b>
------------------------	--	---	-------------------------------	-------------------------



SE-2, 11 JUN 2026 to 09 JUL 2026

SE-2, 11 JUN 2026 to 09 JUL 2026

ELEV <b>32</b>	<b>D</b>	TDZE <b>32</b>
----------------	----------	----------------



CATEGORY	A	B	C	D
LPV DA		369-1/8	337 (400-1/8)	
LNAV/VNAV DA		405-1/4	373 (400-1/4)	
LNAV MDA	420-1	388 (400-1)	420-1/8	388 (400-1/8)
CIRCLING	560-1	528 (600-1)	720-2 688 (700-2)	920-3 888 (900-3)

HIRL Rwy 6-24 and 17-35  
REIL Rwy 6 and 17