

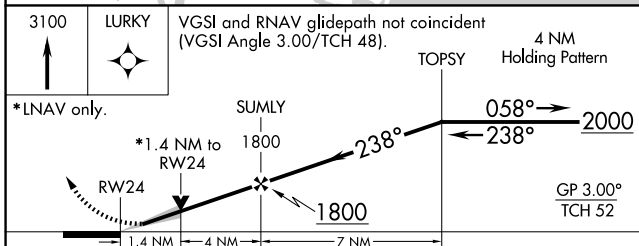
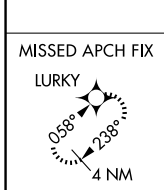
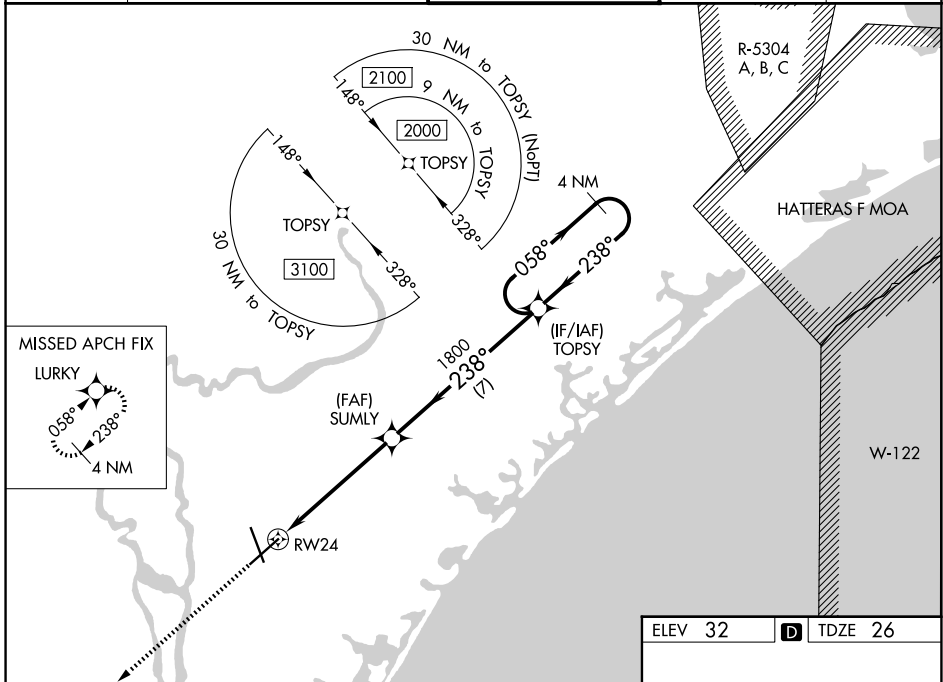
WAAS CH 45899 W24A	APP CRS 238°	Rwy Ldg 8016 TDZE 26 Apt Elev 32
--	------------------------	---

RNAV (GPS) RWY 24

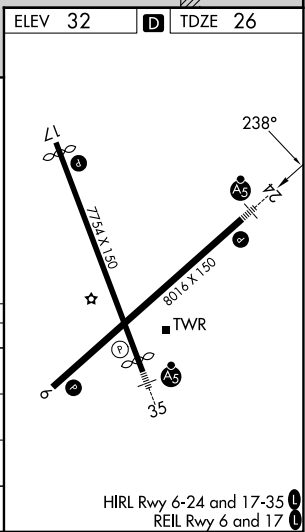
WILMINGTON INTL (ILM)

	For uncompensated Baro-VNAV systems, LNAV/VNAV NA below -7°C (20°F) or above 54°C (130°F). DME/DME RNP-0.3 NA. ** RVR 1800 authorized with use of FD or AP or HUD to DA.	MALSR 	MISSED APPROACH: Climb to 3100 direct LURKY and hold.
--	--	-----------	---

ATIS 124.975	WILMINGTON APP CON★ 118.25 284.65 (164°-343°) 135.75 317.425 (344°-163°)	WILMINGTON TOWER★ 119.9 (CTAF) 239.3	GND CON 121.9 348.6	UNICOM 122.95
------------------------	--	---	-------------------------------	-------------------------



CATEGORY	A	B	C	D
LPV DA **	226/24 200 (200-½)			
LNAV/VNAV DA	401/40 375 (400-¾)			
LNAV MDA	500/24 474 (500-½)	500/50 474 (500-1)		
CIRCLING	560-1 528 (600-1)	720-2 688 (700-2)	920-3 888 (900-3)	



SE-2, 11 JUN 2026 to 09 JUL 2026

SE-2, 11 JUN 2026 to 09 JUL 2026