
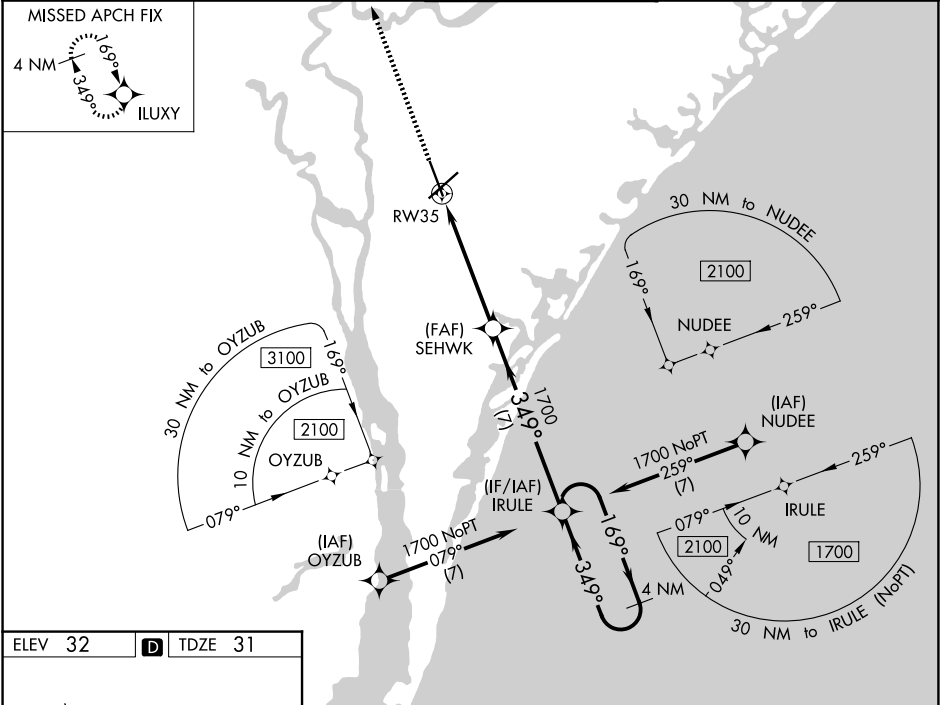


WAAS CH <b>50499</b> <b>W35A</b>	APP CRS <b>349°</b>	Rwy Ldg <b>7204</b> TDZE <b>31</b> Apt Elev <b>32</b>
--	------------------------	---

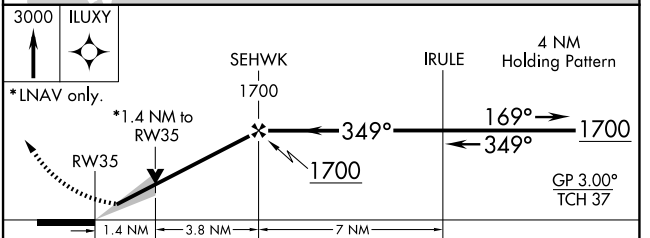
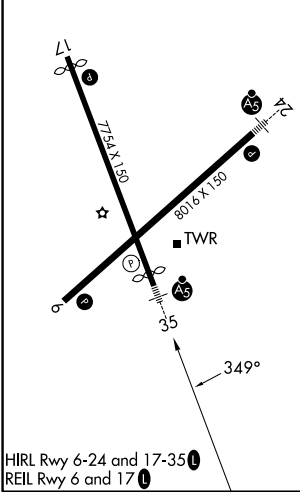
# RNAV (GPS) RWY 35

WILMINGTON INTL (ILM)

<p><b>⚠</b> For uncompensated Baro-VNAV systems, LNAV/VNAV NA below -7°C (20°F) or above 54°C (130°F). DME/DME RNP-0.3 NA. For inop ALS, increase LNAV Cats C/D visibility to 1½ SM.</p>	<p>MALSR</p> 	<p>MISSED APPROACH: Climb to 3000 direct ILUXY and hold.</p>		
<p>ATIS <b>124.975</b></p>	<p>WILMINGTON APP CON★ <b>118.25 284.65</b> (164°-343°) <b>135.75 317.425</b> (344°-163°)</p>	<p>WILMINGTON TOWER★ <b>119.9</b> (CTAF) <b>0 239.3</b></p>	<p>GND CON <b>121.9 348.6</b></p>	<p>UNICOM <b>122.95</b></p>



ELEV 32	<b>D</b>	TDZE 31
---------	----------	---------



CATEGORY	A	B	C	D
LPV DA		242/24	211 (300-½)	
LNAV/VNAV DA		426/45	395 (400-¾)	
LNAV MDA	500/24	469 (500-½)	500/50	469 (500-1)
CIRCLING	560-1	528 (600-1)	720-2 688 (700-2)	920-3 888 (900-3)

SE-2, 11 JUN 2026 to 09 JUL 2026

SE-2, 11 JUN 2026 to 09 JUL 2026