

WAAS CH 86599 W06A	APP CRS 058°	Rwy Ldg 8016 TDZE 28 Apt Elev 32
--	------------------------	---

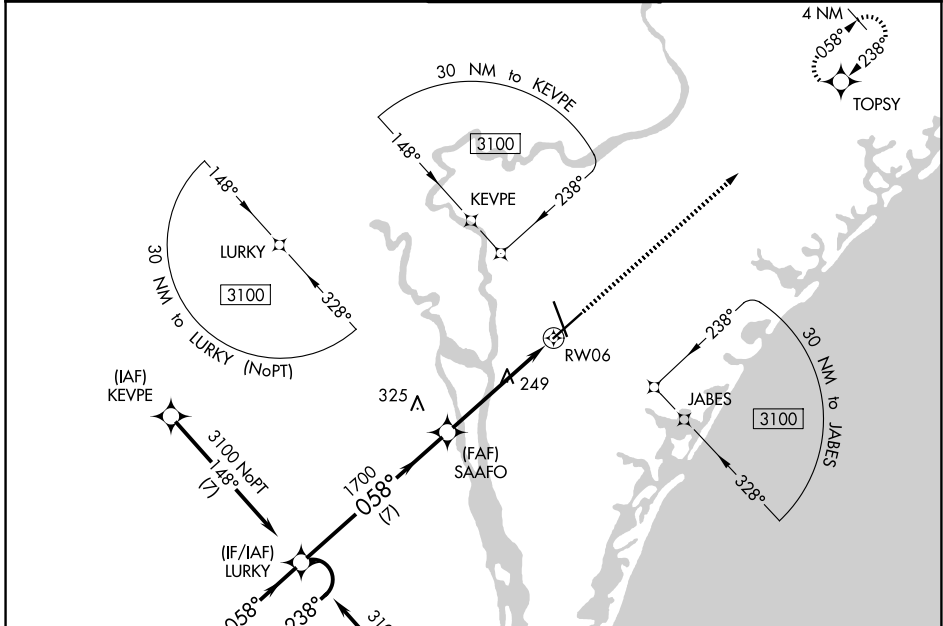
RNAV (GPS) RWY 6

WILMINGTON INTL (ILM)

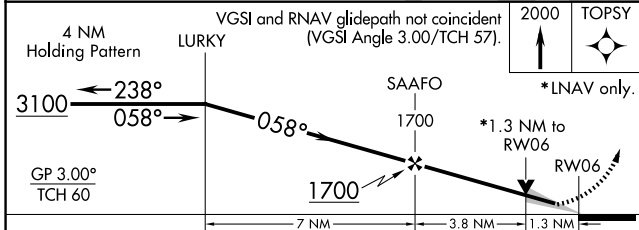
⚠ For uncompensated Baro-VNAV systems, LNAV/VNAV NA below -7°C (20°F) or above 54°C (130°F). DME/DME RNP-0.3 NA.

⚠ MISSED APPROACH: Climb to 2000 direct TOPSY and hold.

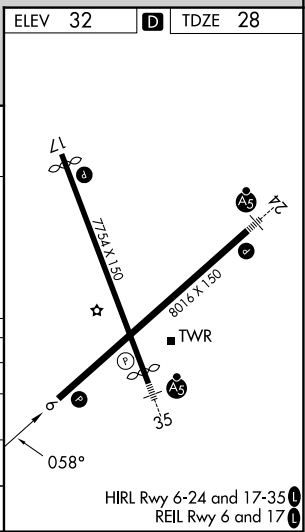
ATIS 124.975	WILMINGTON APP CON★ 118.25 284.65 (164°-343°) 135.75 317.425 (344°-163°)	WILMINGTON TOWER★ 119.9 (CTAF) 0 239.3	GND CON 121.9 348.6	UNICOM 122.95
------------------------	--	---	-------------------------------	-------------------------



ELEV 32	D TDZE 28
----------------	-------------------------



CATEGORY	A	B	C	D
LPV DA	228/40 200 (200-¾)			
LNAV/VNAV DA	434/60 406 (500-1½)			
LNAV MDA	500/55 472 (500-1)	500-1⅜ 472 (500-1⅜)		
CIRCLING	560-1 528 (600-1)	720-2 688 (700-2)	920-3 888 (900-3)	



SE-2, 11 JUN 2026 to 09 JUL 2026

SE-2, 11 JUN 2026 to 09 JUL 2026