

LOC/DME I-KXX <b>108.55</b> Chan 22(Y)	APP CRS <b>328°</b>	Rwy Ldg TDZE Apt Elev <b>6847</b> <b>171</b> <b>173</b>
--	------------------------	--

# ILS or LOC RWY 33

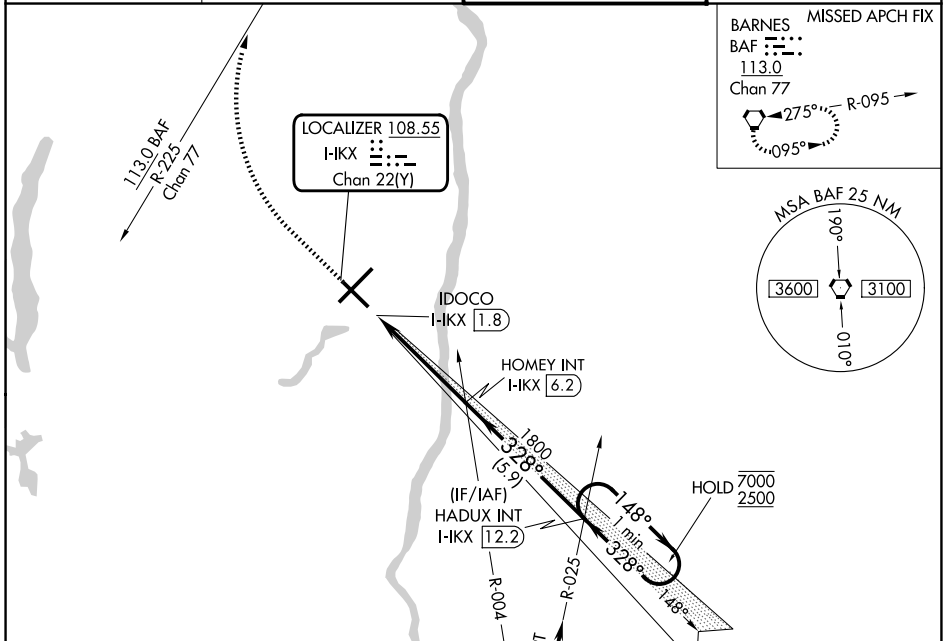
BRADLEY INTL (BDL)

**⚠** Inop table does not apply to S-ILS 33 all Cats.  
For inop ALS, increase S-LOC 33 Cat C/D to RVR 6000.

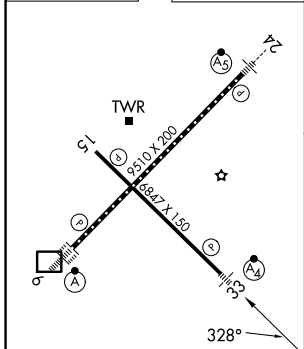
MALSF

MISSED APPROACH: Climb to 1800, then climbing right turn to 4000 on heading 360° and BAF VORTAC R-225 to BAF VORTAC and hold, continue climb-in-hold to 4000.

D-ATIS <b>118.15</b>	BRADLEY APP CON <b>123.95 290.55</b> (061°-240°) <b>125.35 281.5</b> (241°-060°)	BRADLEY TOWER <b>120.3 351.8</b>	GND CON <b>121.9 348.6</b>
-------------------------	--	-------------------------------------	-------------------------------



ELEV 173	<b>D</b>	TDZE 171
----------	----------	----------

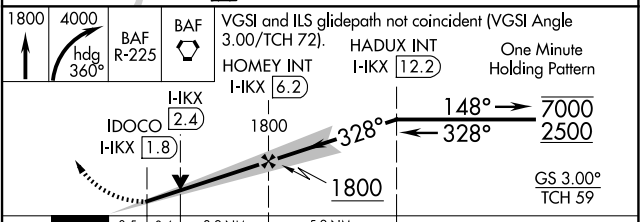


HIRL Rwy 6-24 and 15-33  
REIL Rwy 15  
TDZL/RCLS Rwy 6 and 24  
FAF to MAP 4.4 NM

Knots	60	90	120	150	180
Min:Sec	4:24	2:56	2:12	1:46	1:28

IAF HARTFORD 114.9 HFD Chan 96

Procedure NA for arrivals at HFD  
VOR/DME on airway radial 053.



CATEGORY	A	B	C	D
S-ILS 33		371/40	200 (200-¾)	
S-LOC 33	580/40	409 (500-¾)	580/50	409 (500-1)
CIRCLING	700-1	527 (600-1)	1100-2¾ 927 (1000-2¾)	1220-3 1047 (1100-3)